



MAGELLANO  
25  
METRI



An exquisite new jewel hovers between sky and sea,  
Where time is suspended and the journey begins.  
Cruising has never been so unconventionally perfect.







The Magellano collection was created to offer a range of boats which were seaworthy and suitable for a long family cruising, but also quite unique, with internal spaces which were not only spacious, offering long sightlines, continuity of line, and panoramic views out.

The external styling is timeless, elegant and yet at the same time totally purposeful.



The innovative cockpit design features a retractable panel that can be lowered to leave a transparent parapet, transforming the space into a glorious terrace with unimpeded views onto the sea.

The same panel, which also serves as the garage hatch, then unfolds to create a spacious bathing platform by the water's edge.







An elegant spiral staircase leads up to the fly deck, where the hard top is supported by a minimalist central mast.





Vincenzo De Cotiis Décor Version flybridge view



The versatile bow area can be enjoyed whilst stretched out on sunbeds or as a lounge zone, depending on the time of day.





MAGELLANO 25METRI

---

# STIL NOVO

INTERIOR DÉCOR VERSION

---

*Interior design project and concept by Vincenzo De Cotiis*

*Interior design and decoration by Azimut Yachts*







MAGELLANO 25METRI

## STIL NOVO

Stil Novo interior design in the living room version with L-shaped sofa on portside and sofa or armchairs on starboard side.







Possibility to separate the sink area with a sliding mirrored panel







The sleeping zone on the Lower Deck contains an owner's suite, two VIP cabins and a fourth with twin beds



MAGELLANO 25METRI

## STIL NOVO

Stil Novo interior design can be enriched with ivory ribbed wood decorative panels in the salon and Owner's Suite.





MAGELLANO 25METRI

---

# NEW CONTEMPORARY

INTERIOR DÉCOR VERSION

---

*Interior design project and concept by Vincenzo De Cotiis*

*Interior design and decoration by Azimut Yachts*





Inspired by the concept of the gentle form of the waves, the seating, curves and even the depth achieved in the spatial dimension all evoke the movement of the sea's surface. This connection with the sea is also seen in the choice of colours with an intense blue that veers towards green, recalling the hue of water at its deepest points.

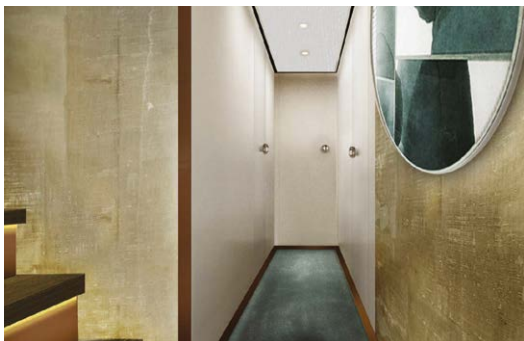












View of the fore VIP Cabin

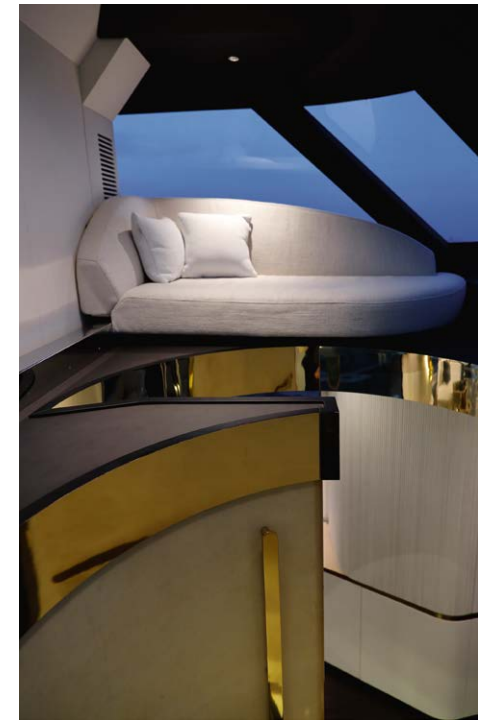


Starboard twin bed cabin



View of the portside main VIP cabin

Possibility to configure the cabin with two sliding beds



The Magellano 25METRI features a Raised Pilot House that can be accessed both from the flybridge and internal lobby, facilitating crew movement whilst offering maximum privacy to the owner and guests. Designed to ensure optimal visibility, the space contains seating for a co-pilot in the form of a small divan/chaise longue and a latest generation glass cockpit dashboard.

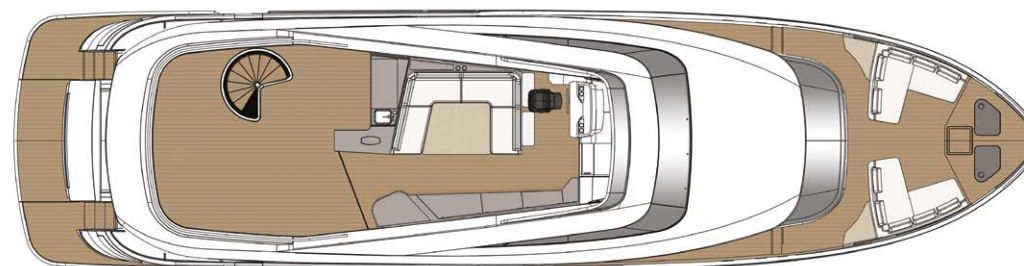




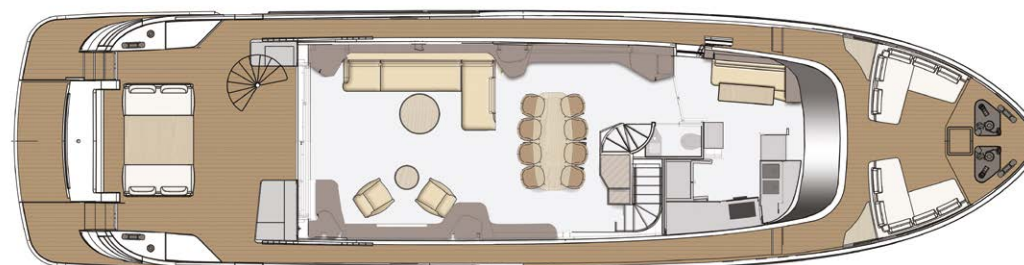
## MAIN TECHNICAL DATA

### MAGELLANO 25METRI

Length overall (incl. handrall)	25,22 m (82' 9")
Beam max	6,35 m (20' 10")
Draft (incl. props at full load)	1,9 m (6' 3") incl. skeg
Displacement (at full load)	87,5 t (192904 lb)
Engines	2 x MAN V12 1400 mHP 2 x MAN V12 1550 mHP
Maximum speed	up to 24-25 kn
Cruising speed	up to 18-22 kn
Fuel capacity	8.000 l (2.114 US Gal)
Water capacity	1.500 l (396 US Gal)
Cabins	4 + 2 crew
Berths	8 + 3 crew
Head compartments	5 + 1 crew
Construction material	Carbon fibre + GRP
Exterior designer	Ken Freivokh
Interior concept	Vincenzo De Cotiis
Interior design and decoration	Azimut Yachts Style Dept.



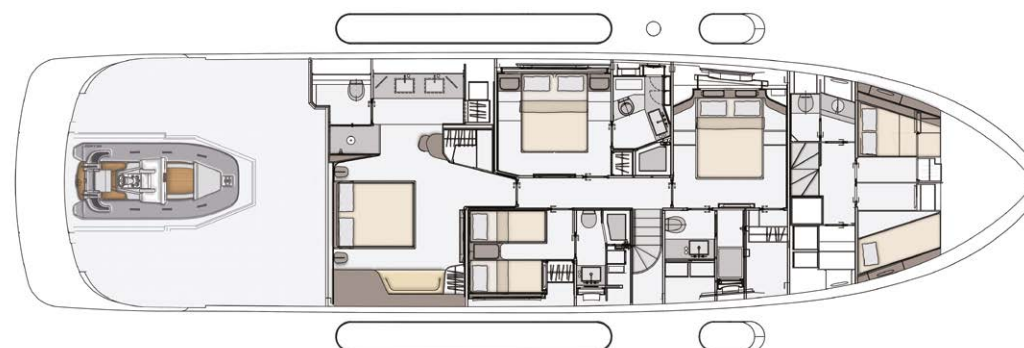
FLYBRIDGE



MAIN DECK



WHEEL HOUSE



LOWER DECK

MAGELLANO  
25  
METRI



[AZIMUTYACHTS.COM](http://AZIMUTYACHTS.COM)

This brochure in no way constitutes a contract of sale for the boatyard's vessels to any person or company. All information contained herein, including but not limited to technical and performance data, illustrations, and drawings, is non-binding and for purposes of illustration only. The information in this brochure refers to the boatyard's standard motoryacht models available as of the date of publication. Technical and descriptive information is valid only to the extent that it pertains to the specific vessel that is the subject of a purchase. Contract terms are valid only to the extent that they are contained in a contract of sale. This document is based on information available at the time of publication. Despite efforts to ensure the greatest possible accuracy, the information contained herein may fail to cover all details, omit technical or commercial changes that may have been made subsequent to publication, describe features that are not present, and fail to envisage all circumstances that might occur. Any illustrations, photographs, diagrams and examples shown in this brochure are included solely for the purposes of illustrating the text. Due to the different features of each vessel, the boatyard assumes no liability for actual use based on the illustrated applications.