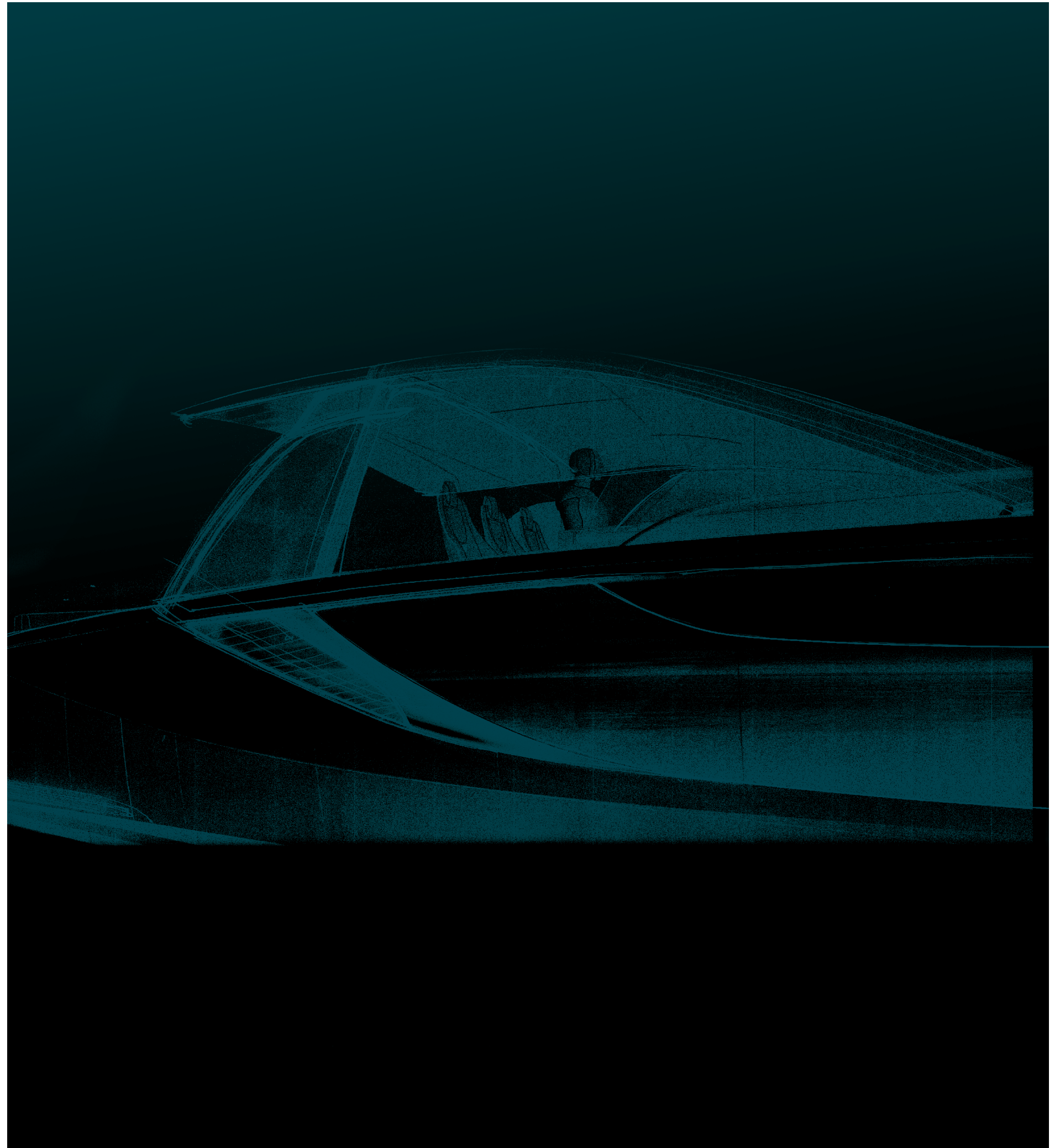
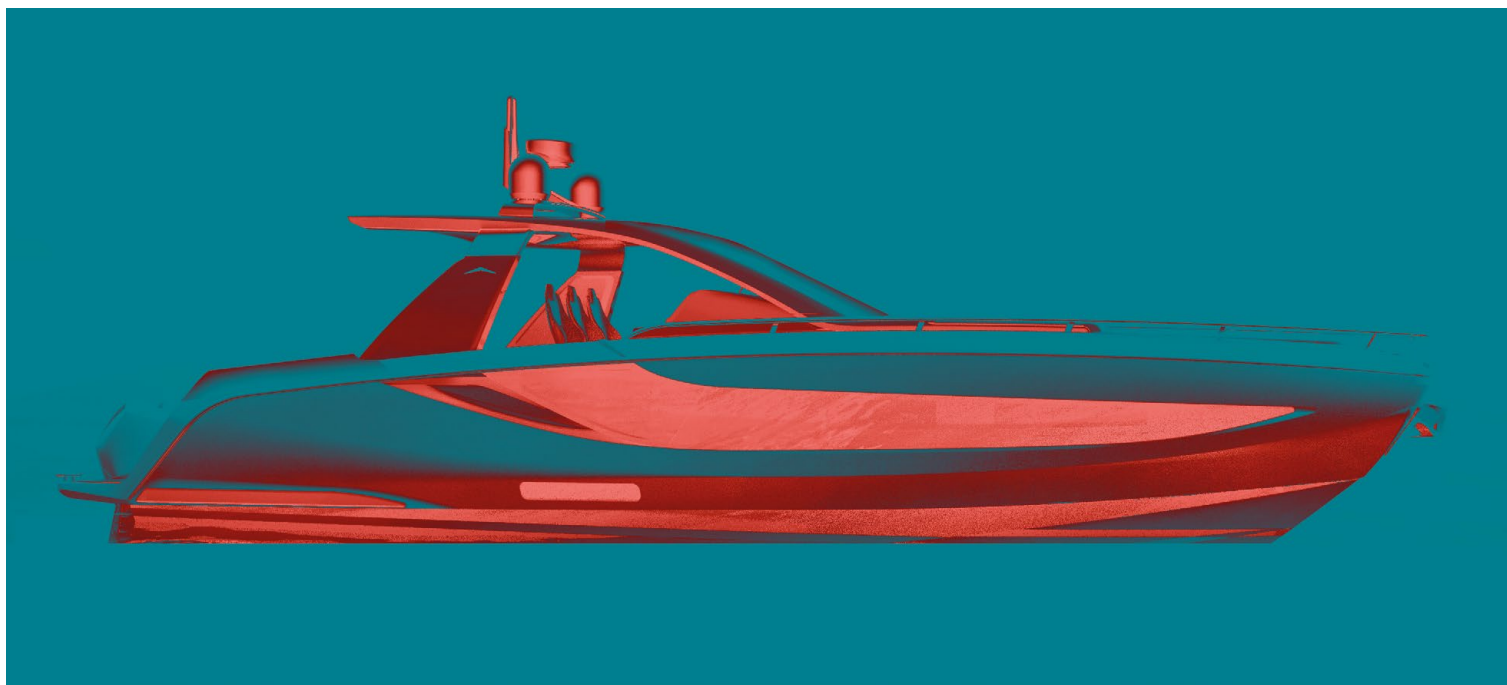
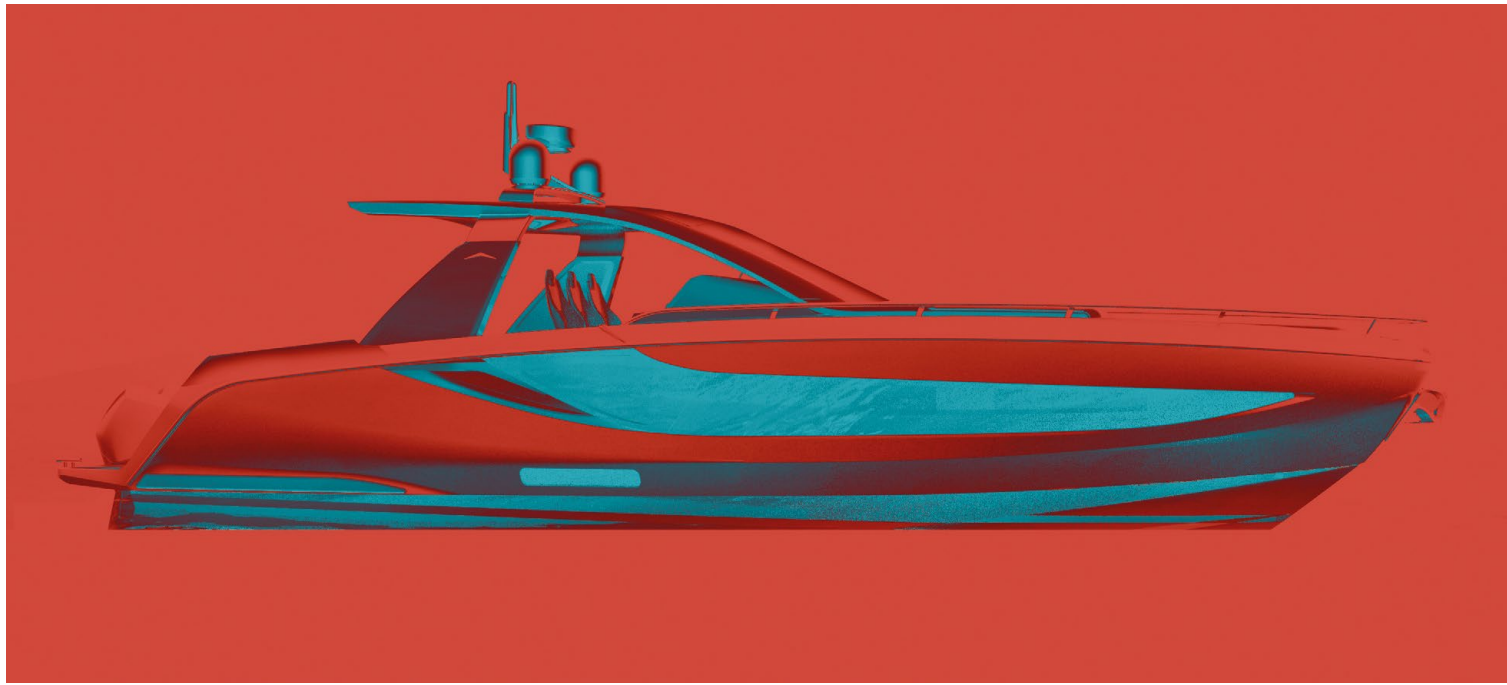




VERVE

42

PRELIMINARY PRESENTATION







NEW VERVE 42

THE NEW ULTIMATE
BOATING MACHINE









Portside aft bulwark folds out to enlarge the space offering an easy access to the sea.

NEW VERVE 42

DESIGNED
TO THRILL







Privacy curtain





Privacy curtain



SVVT HULL

STEPPED V

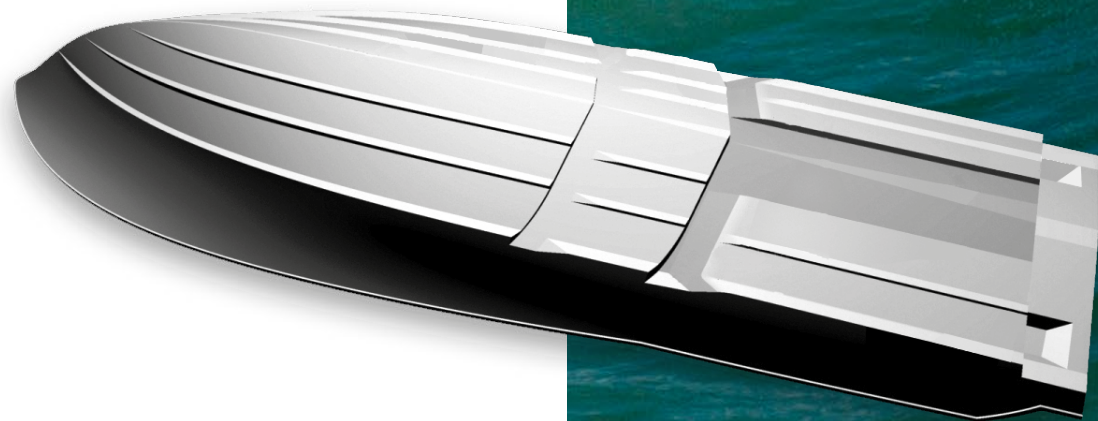
VENTILATED TUNNEL

The high performance patented Stepped 'V' Ventilated Tunnel (SVVT) was developed by Michael Peters. As shown in figure, the SVVT hull form incorporates a classic deep 'V' hull with two transverse steps and a central tunnel aft.

Unique to other current stepped deep 'V's, is the central tunnel aft, which is the key attribute to its performance. The shallow tunnel serves to increase the longitudinal stability of the boat in high speed turns and adverse situations.

The tunnel creates lateral area and carries a channel of water that controls the aft end of the boat and keeps it from spinning out of control. Combined with the reduced wetted surface created by the transverse steps, the tunnel ventilates with air and clears out at high speed, further reducing drag.

The combination of deep 'V', steps and ventilated aft tunnel add up to being the most efficient high speed rough water hull form developed today.



VERVE
— 42 —

OPTIMISED DISPLACEMENT AND IMPROVED MANOEUVRABILITY

A yacht with the dynamic and sporting DNA of the new Verve 42 demands a premium partner in the power stakes and that comes in the form of a trio of Mercury V8 450R engines.

Ideal for fast, light boats, they deliver a significant increase in power, an high power to weight ratio and an extraordinary level of responsiveness and handling, together with outstanding performance at sustained cruising speeds.

Last but not least, in the context of overall design, the choice of the V8 450R enables the boat to meet key criteria such as **optimised displacement and improved manoeuvrability**, ensuring safe, fun and sporty performance out on the water.



SOURCE: MERCURY TECHNICAL DEPT.



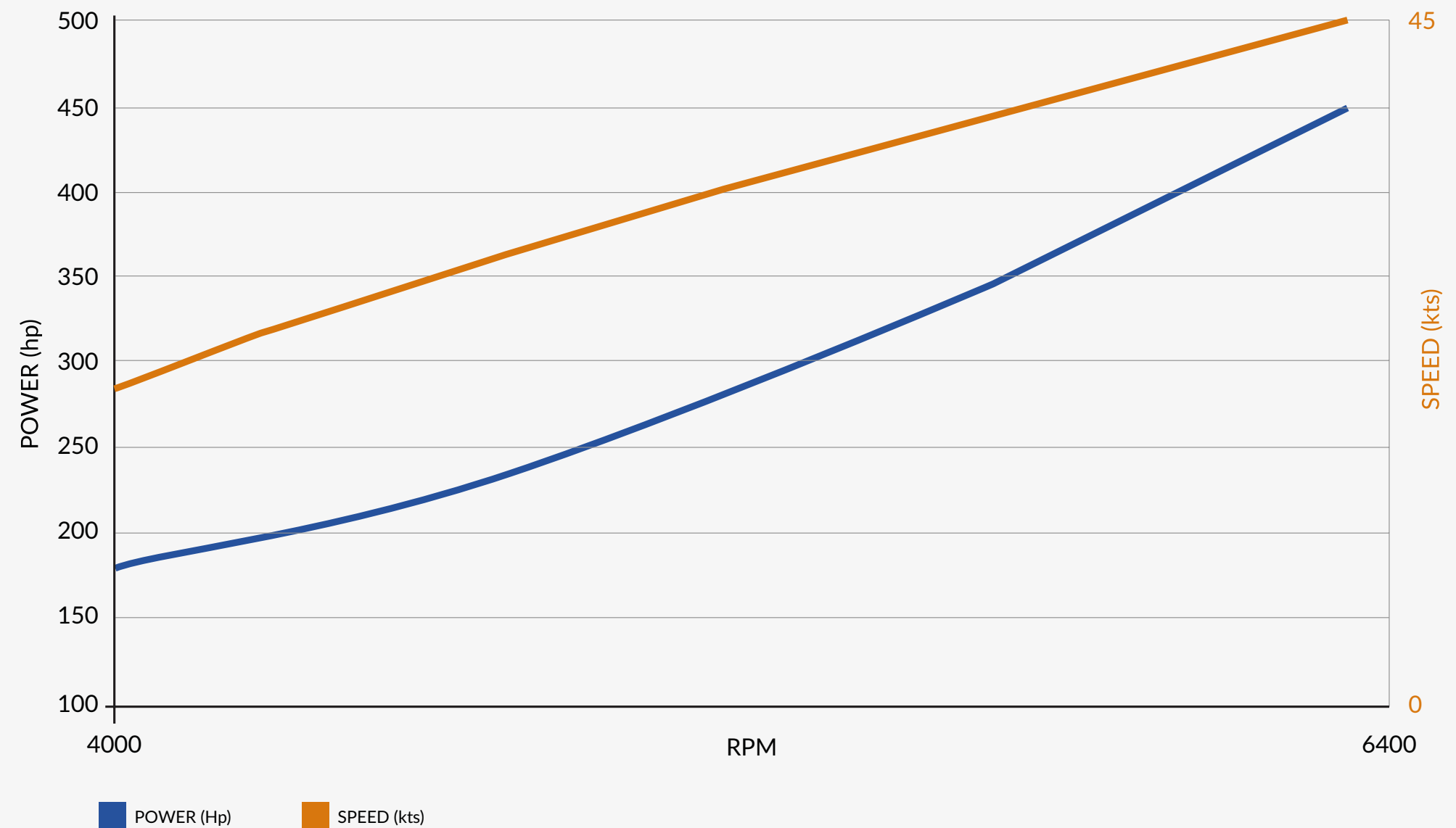


THE TRIPLE V8 AND VERVE 42 A MATCH MADE IN HEAVEN 3 REASONS WHY

- 1_** The triple V8 engine boasts the **BEST POWER-TO-WEIGHT RATIO** in the industry, delivering around **15% MORE POWER** than its nearest competitor.
- 2_** The Mercury 450R combines a **4.6-LITRE V8 WITH A VOLUMETRIC SUPERCHARGER AND TRANSIENT SPARK TECHNOLOGY**, which **OPTIMISES TORQUE OUTPUT, EVEN AT LOW SPEEDS, TO DELIVER UNPRECEDENTED ACCELERATION.**
- 3_** **THE MERCURY V8 PROVIDES THE HIGH SPEED** and responsiveness necessary to optimise the agility and performance the Verve 42 was designed to deliver, with a **MAXIMUM SPEED OF AT LEAST 10% MORE** than any other Mercury engine solution.


SOURCE: MERCURY TECHNICAL DEPT.

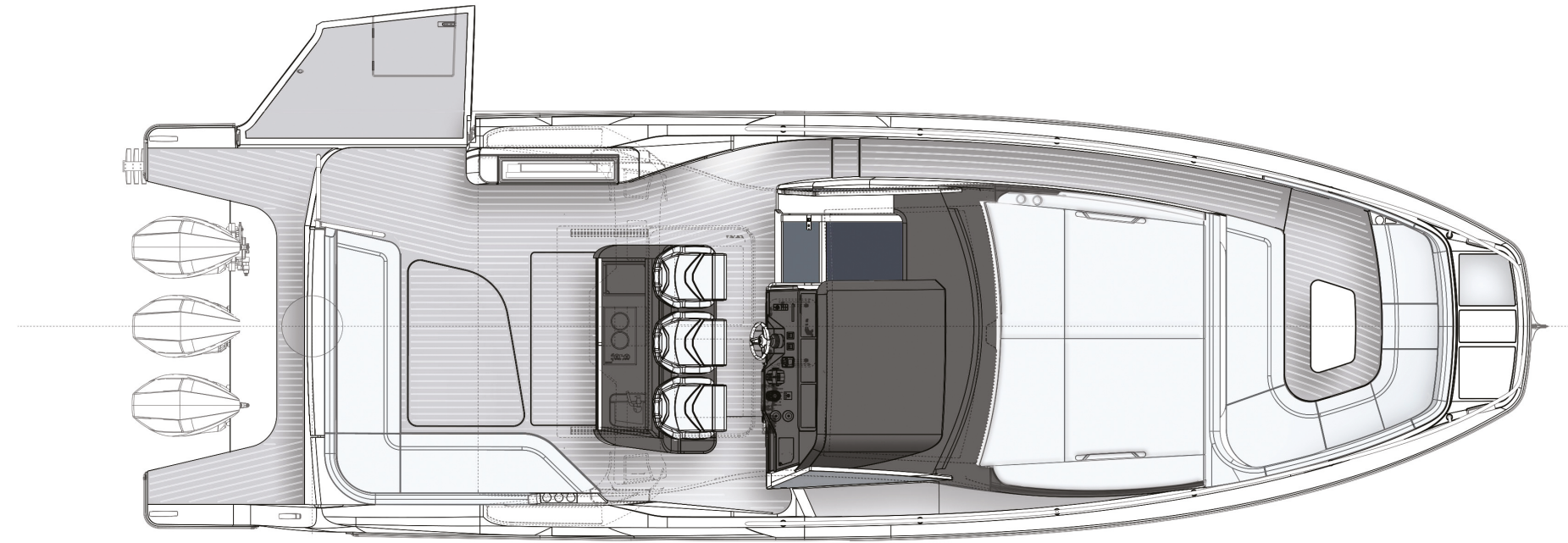
AZIMUT VERVE 42 WITH TRIPLE MERCURY V8 450R ENGINE PERFORMANCE



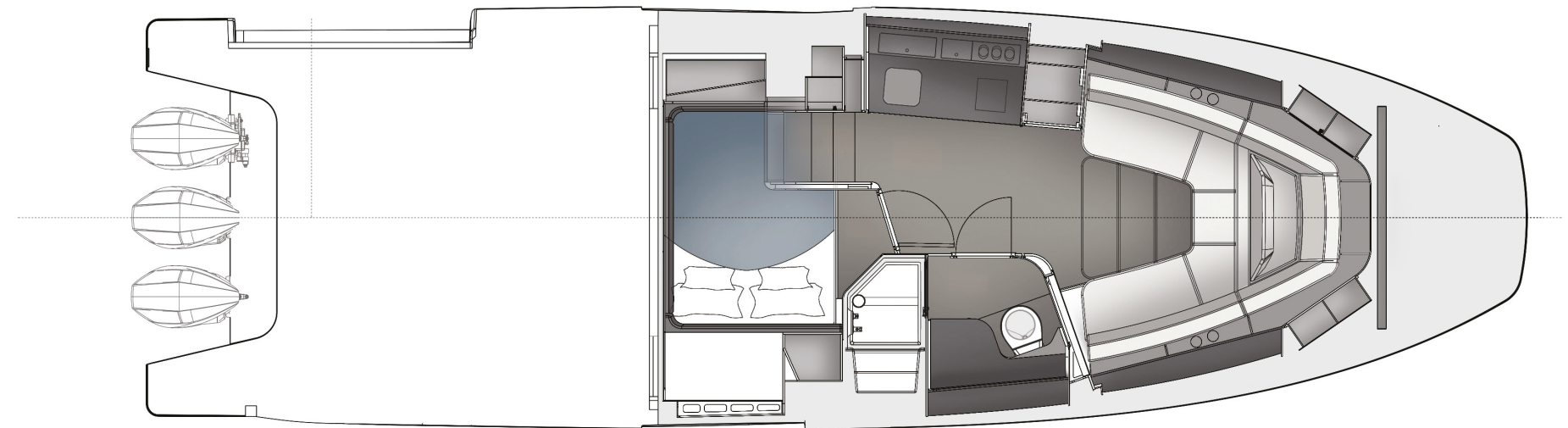
MAIN PROJECT DATA

NEW VERVE 42

Length overall (incl. pulpit)	12,9 m (42' 4")
Beam max	3,94 m (12' 11")
Displacement (at full load)	13,5 t (29760 lb)
Engines  <small>Powered by</small> MERCURY	3 x 450 Mercury Racing
Maximum speed	up to 45 kn
Cruising speed	up to 33 kn
Fuel capacity	1750 l (462 US Gal)
Fresh water capacity	250 l (66 US Gal)
Cabins	1
Berths	2 + 2
Head compartments	1
Building material	Carbon fibre + GRP
Exterior and interior design	Francesco Struglia
Hull designer	Michael Peters Yacht Design
Builder	Azimut Yachts



MAINDECK



LOWERDECK

VERVE
42



AZIMUTYACHTS.COM

This brochure in no way constitutes a contract of sale for the boatyard's vessels to any person or company. All information contained herein, including but not limited to technical and performance data, illustrations, and drawings, is non-binding and for purposes of illustration only. The information in this brochure refers to the boatyard's standard motoryacht models available as of the date of publication. Technical and descriptive information is valid only to the extent that it pertains to the specific vessel that is the subject of a purchase. Contract terms are valid only to the extent that they are contained in a contract of sale. This document is based on information available at the time of publication. Despite efforts to ensure the greatest possible accuracy, the information contained herein may fail to cover all details, omit technical or commercial changes that may have been made subsequent to publication, describe features that are not present, and fail to envisage all circumstances that might occur. Any illustrations, photographs, diagrams and examples shown in this brochure are included solely for the purposes of illustrating the text. Due to the different features of each vessel, the boatyard assumes no liability for actual use based on the illustrated applications.