

AZIMUT
Grande

TRIDECK

AZIMUT
Grande



TRIDECK



TRIDECK

THREEDecks+ONE

The very quintessence of innovation, Azimut Grande Trideck features a new living area, never seen before on a yacht this size: the Sea View Terrace.

As the latest addition to the traditional tripledecker, the Sea View Terrace is an aft raised "mezzanine" deck. Thanks to this layout innovation, Grande Trideck offers four terraces, completing a visual effect of cascading terraces from the Sundeck down to the sea.



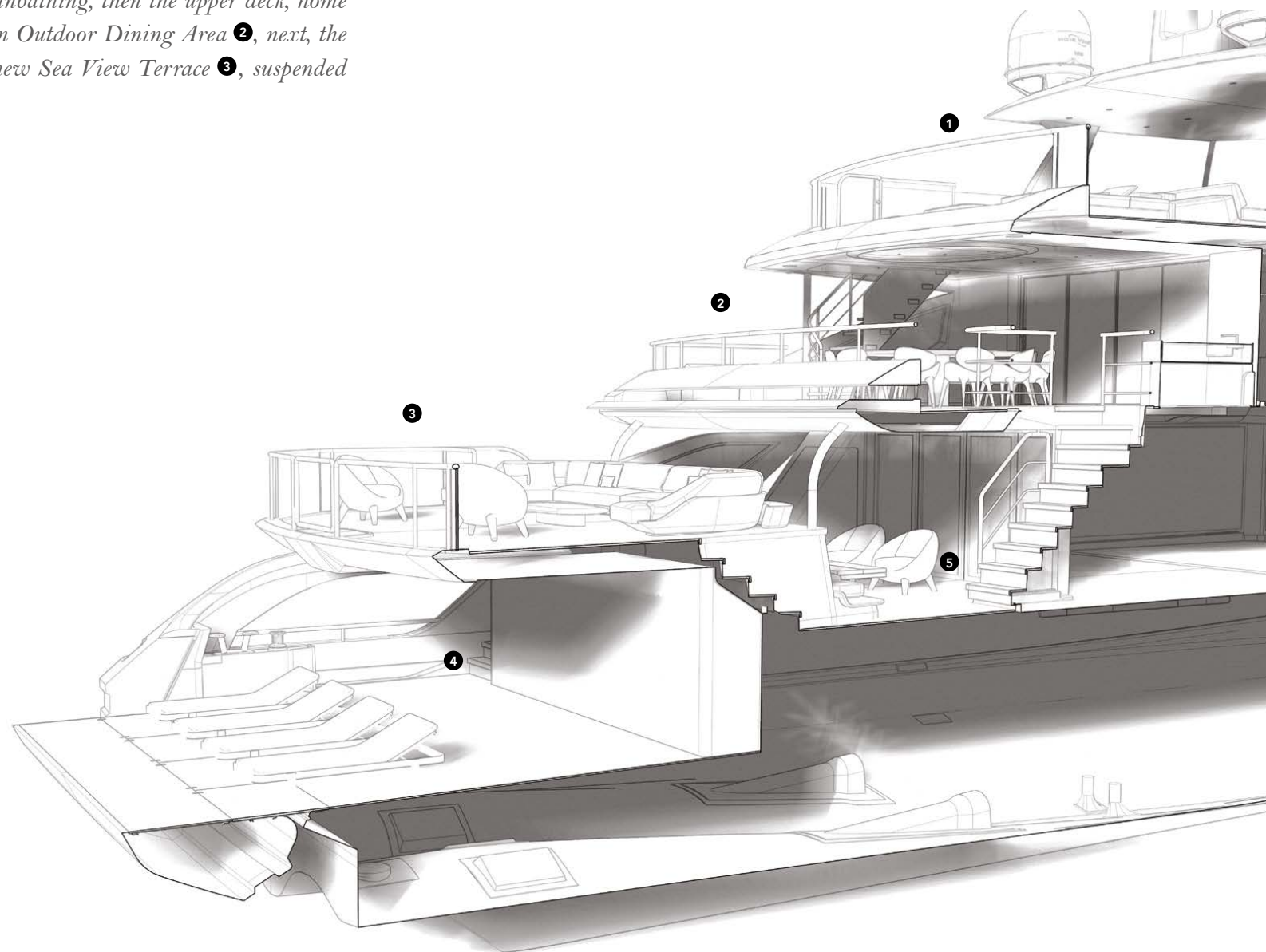
FOUR TERRACES

REINVENT THE WONDER OF LIFE AT SEA

Azimut Grande Trideck features a new living area never seen before on a yacht this size, the Sea View Terrace. The Sea View Terrace is an aft raised “mezzanine” deck, which is the latest addition to the traditional triple-decker.

The innovative layout creates four terraces and a covered patio: the sundeck ❶, perfect for secluded sunbathing, then the upper deck, home to the main Outdoor Dining Area ❷, next, the stunning new Sea View Terrace ❸, suspended

tantalising above the water, and down below, a full-height Beach Club area at sea level ❹. The introduction of the mezzanine creates space for an intimate sheltered Private Patio ❺ nestled between the Sea View terrace and salon.



THE SEA HAS LONG BEEN WAITING
FOR SOMETHING NEW



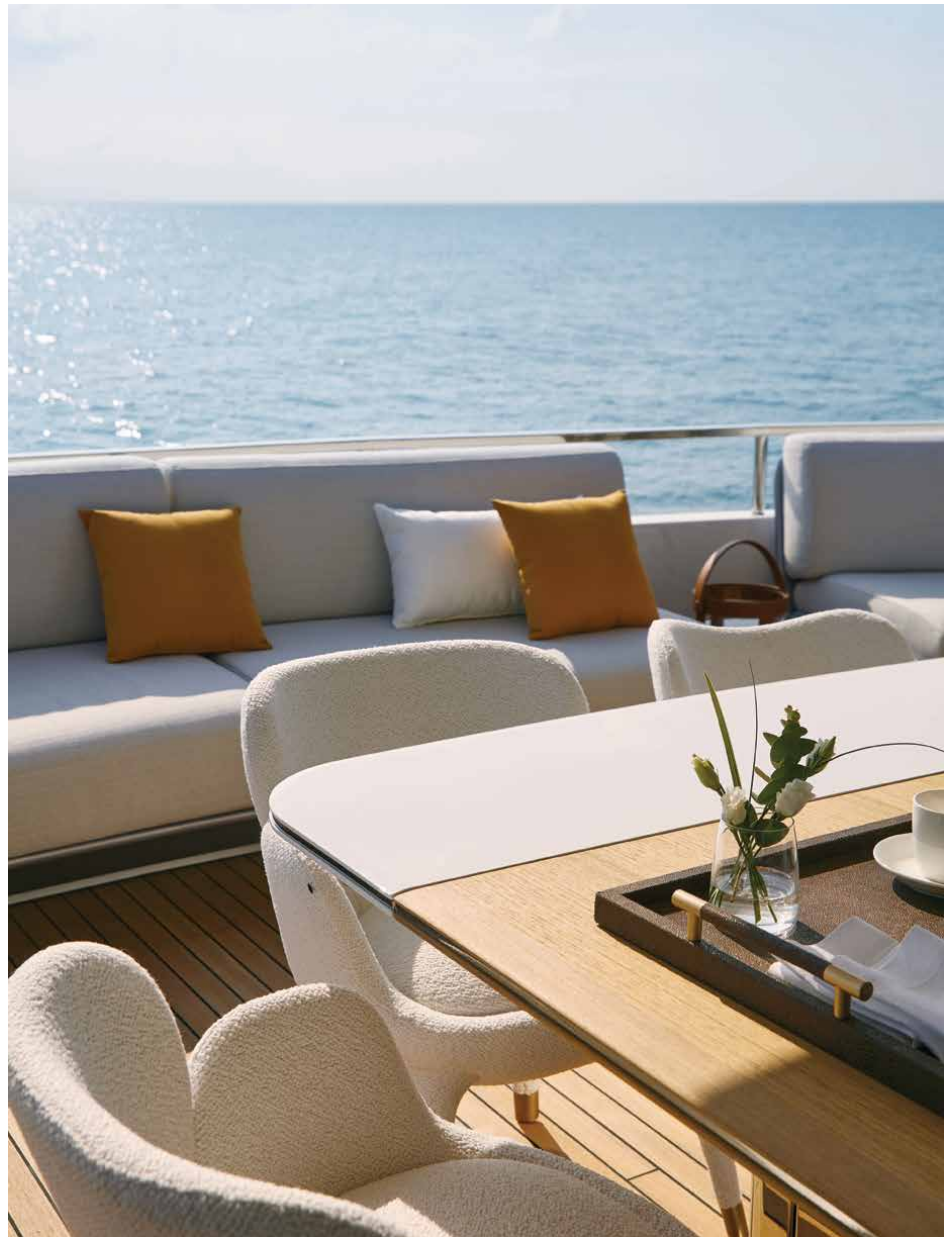
TRIDECK

THREEDecks+ONE





The Sea View Terrace lounging area is the ideal place for creating special memories as you relax, suspended between sky and sea.

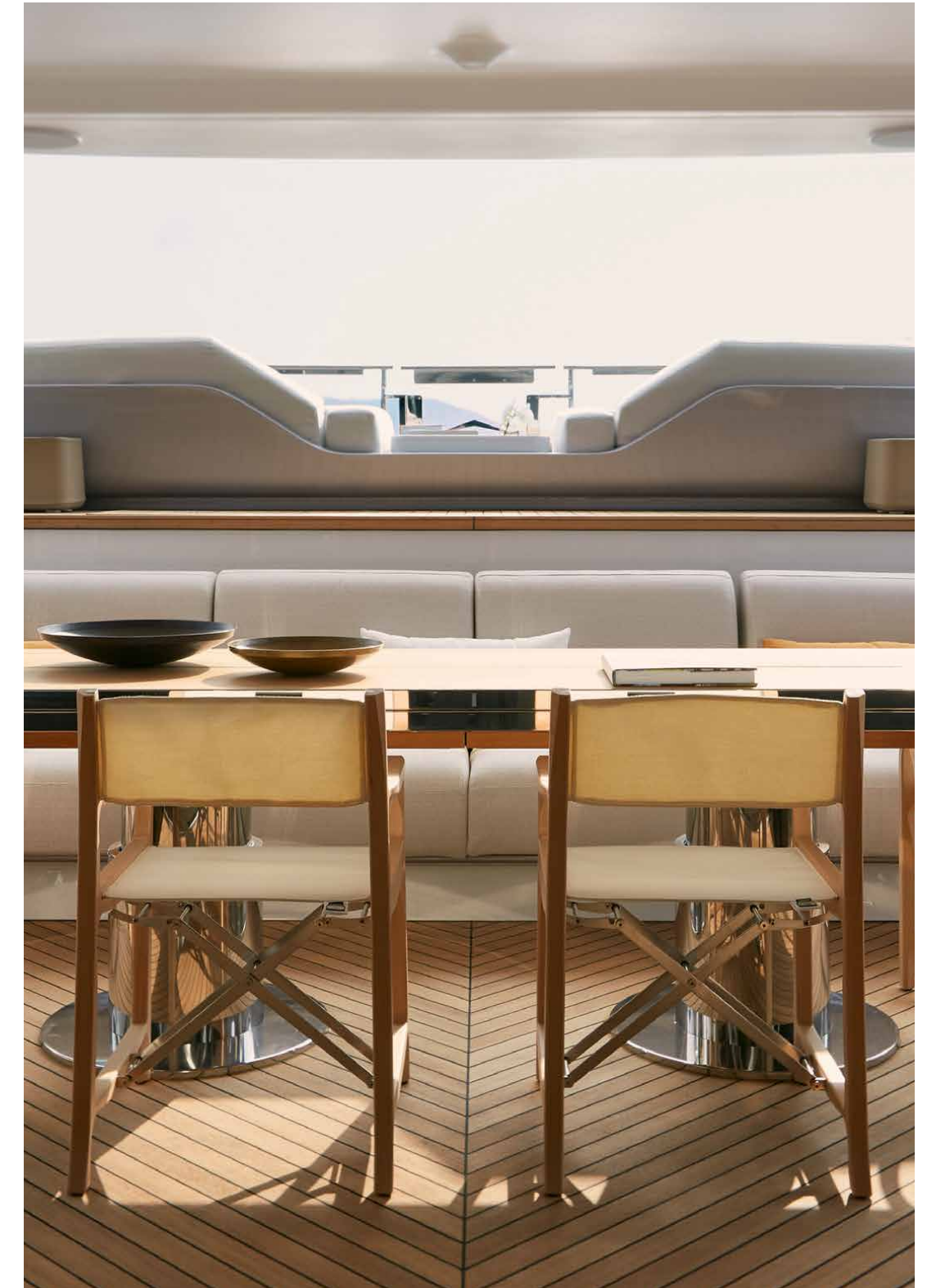




The Sea View Terrace is an open stage, a new cantilevered area that precedes the traditional cockpit. Raised above the surface of the water and conceived as a living room overlooking the sea, the floating platform keeps in touch with the sun and the water at once.







More than a cockpit: a Private Patio. The aft raised "mezzanine" creates a proper Private Patio at the entrance to the salon, perfect to enjoy a complete privacy.





*Whatever you need
whenever you want*



With two meters of headroom and cutouts in the sidewalls, this is a true beach on the sea. During stops at anchor, the hinged transom opens to increase the available surface to more than 30 square meters. The Beach Area is equipped to connect guests directly with the sea, fully customizable in furnishing and served by a day head and wet bar.





A NEW
MEANING
OF **LIFE AT SEA**

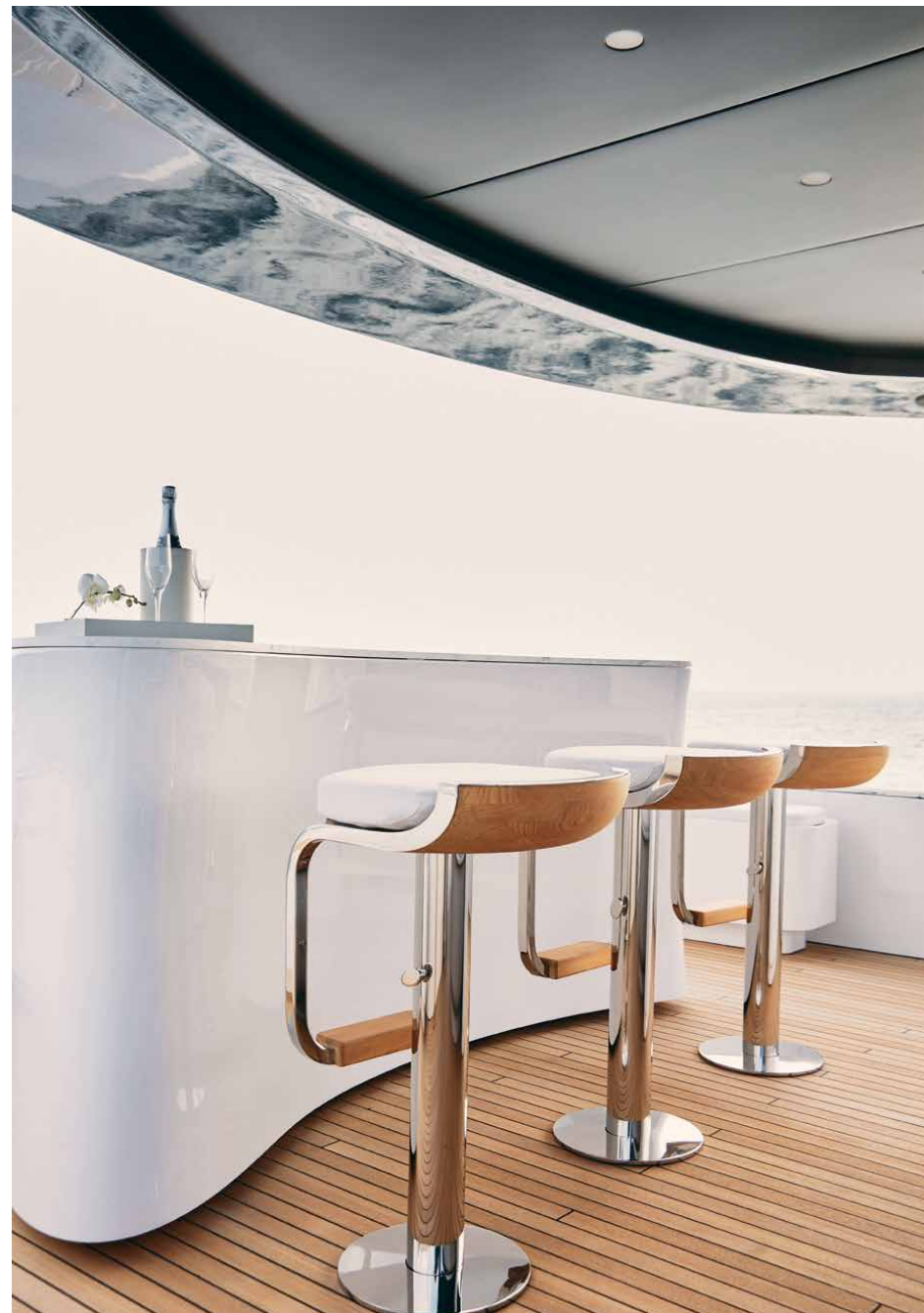






The main outdoor dining area, aft of the Upper Deck, develops around a square table extendible to seat up to 12 guests realised in handcrafted natural teak with lacquered inserts. The area is rounded off by corner sofas for aperitivo and a series of furniture for the service.





On the Sun Deck, a large sunbathing area at the stern with freestanding furniture and a view overlooking the sea, is a perfect oasis of wellness. The lounge area is composed by opposing circular sofas, with a table for lunch in the center and towards the bow, an American bar overlooks the horizon with a large barbecue.



*The art
of life at sea*



View of the bow lounging area.



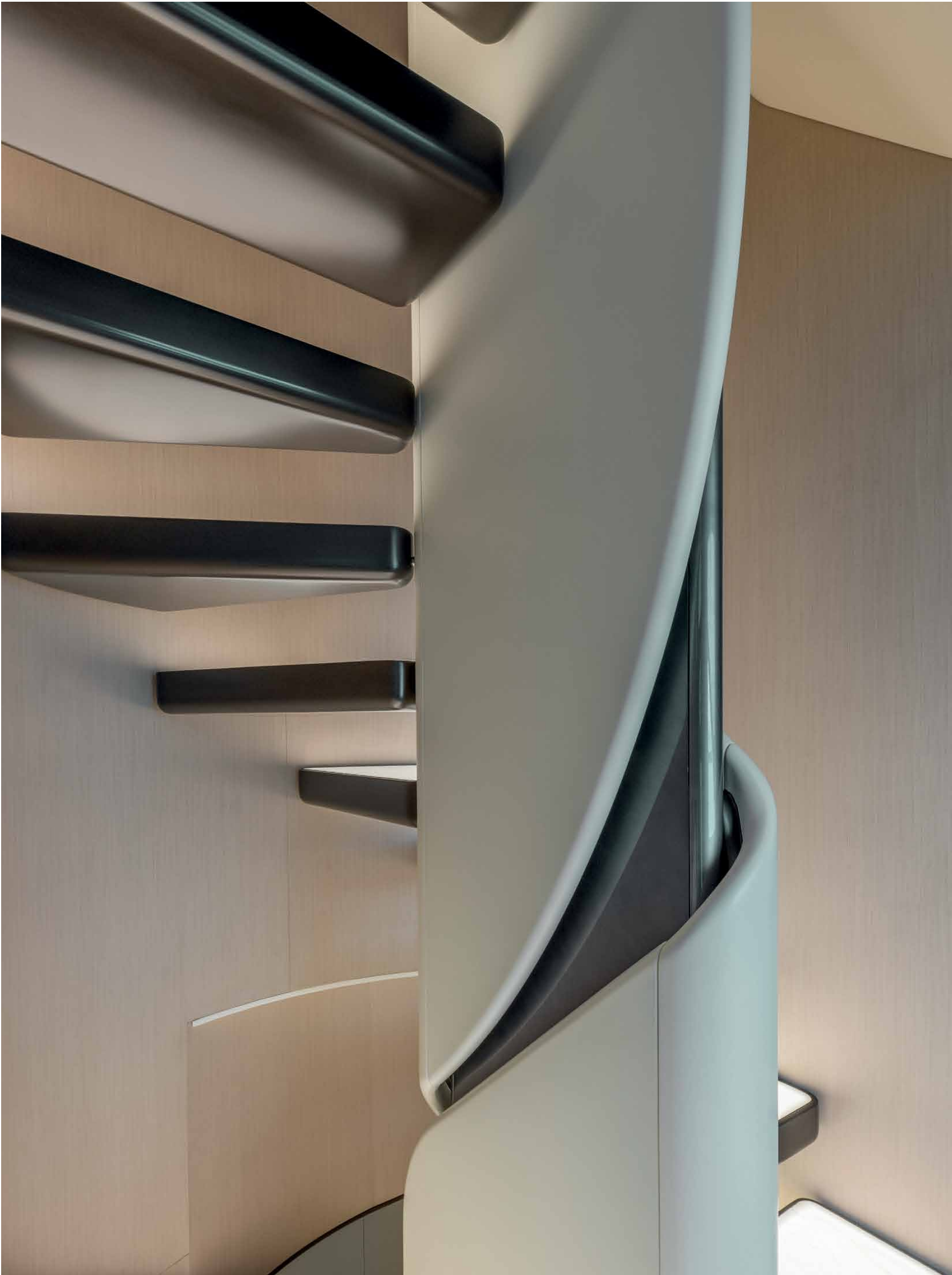
HERITAGE
AND
CRAFTSMANSHIP







The interior design by Achille Salvagni reimagines the use of interior spaces, leaving behind the traditional subdivisions to accommodate a more natural way of experiencing life onboard. The style is streamlined, favors the purity and cleanliness of the line and at the same time enhances the perception of an ever higher quality.

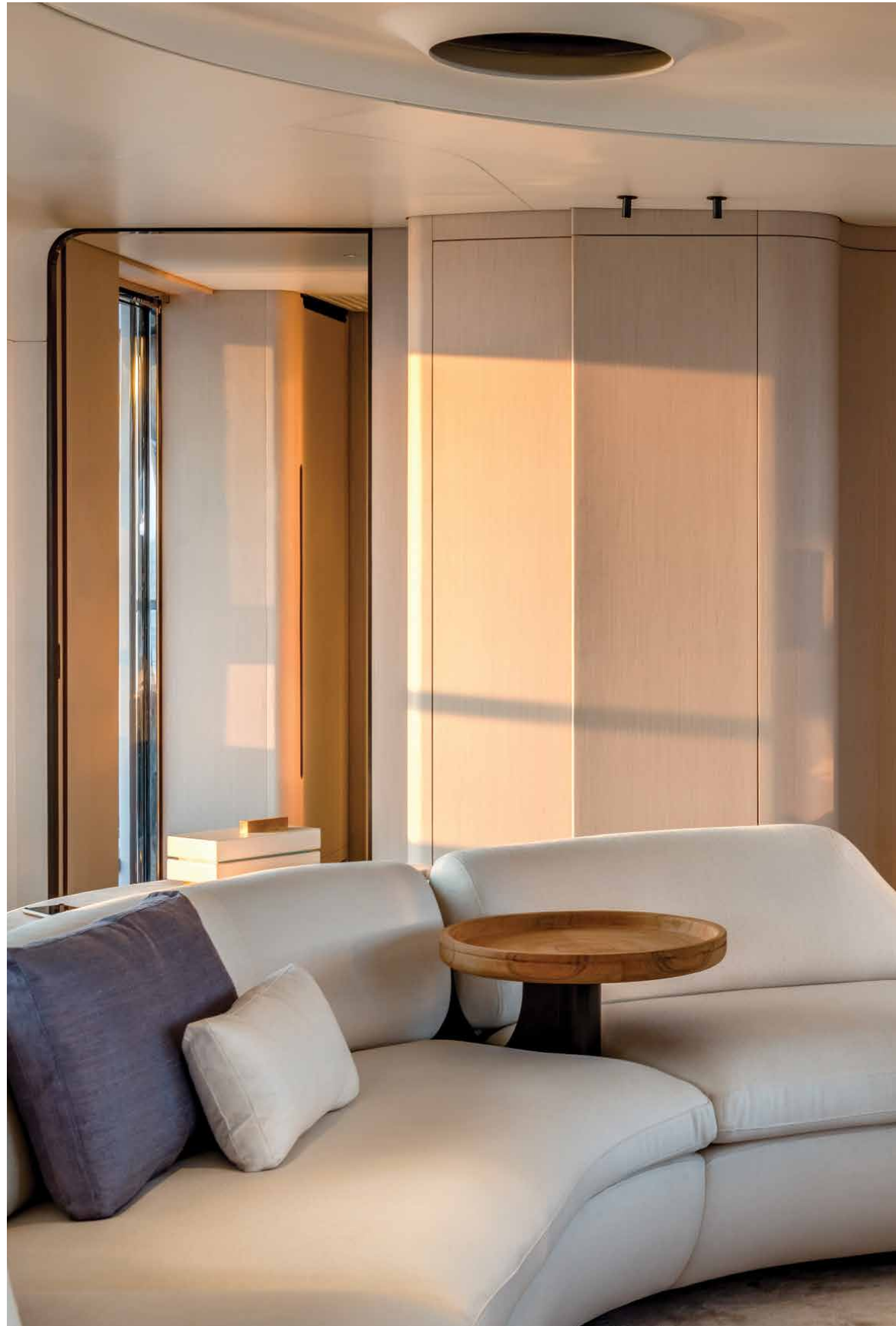






*The harmony
of shapes*



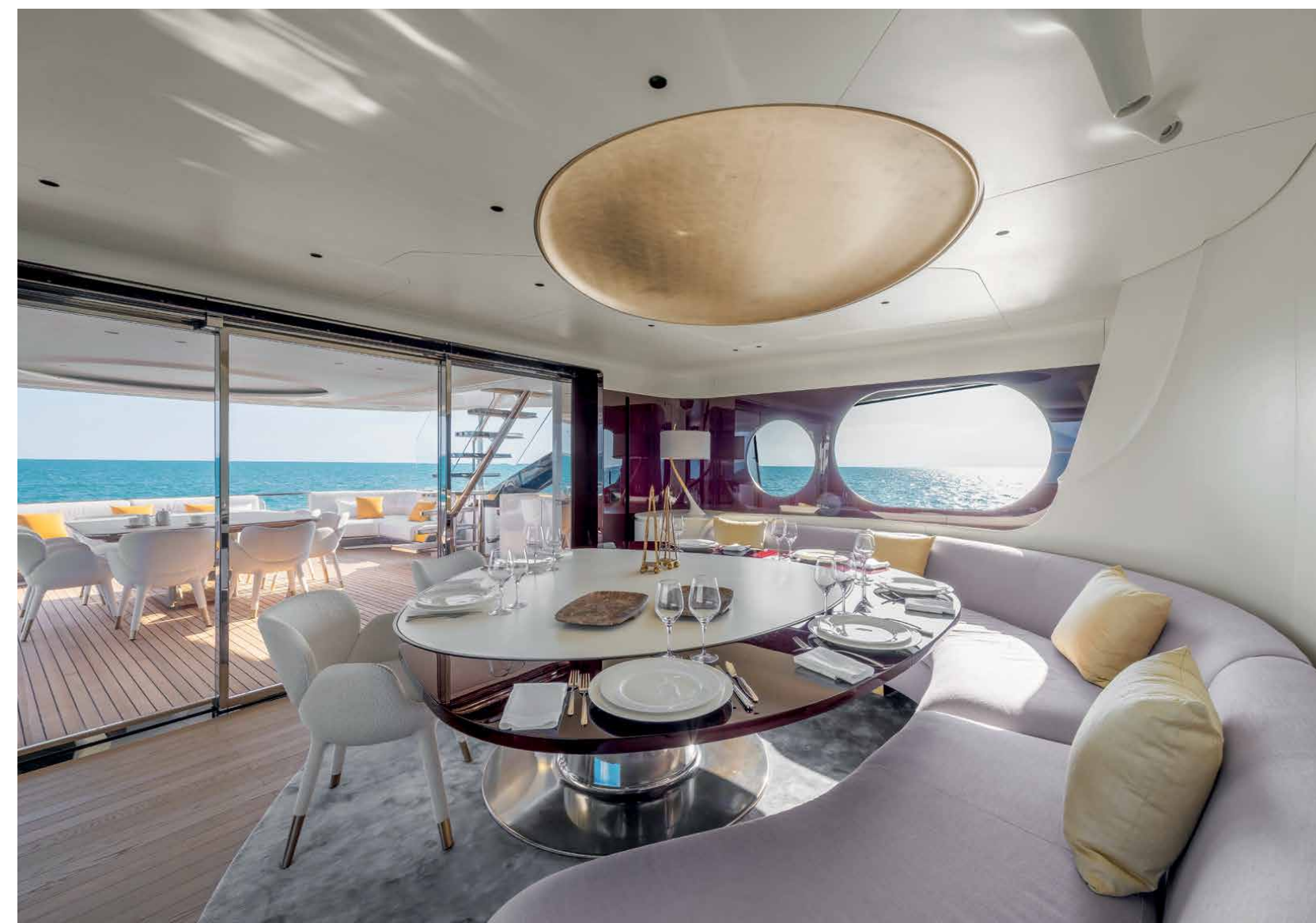






The indoor dining area may be located on the Upper Deck, conceived as a multipurpose area shaped as an intimate nook, with a huge cozy sofa and a convertible table which can be raised and extended to accommodate up to 12 guests.

For the Owners who prefer a more traditional dining, it is available a layout with a formal dining area on the Main Deck.





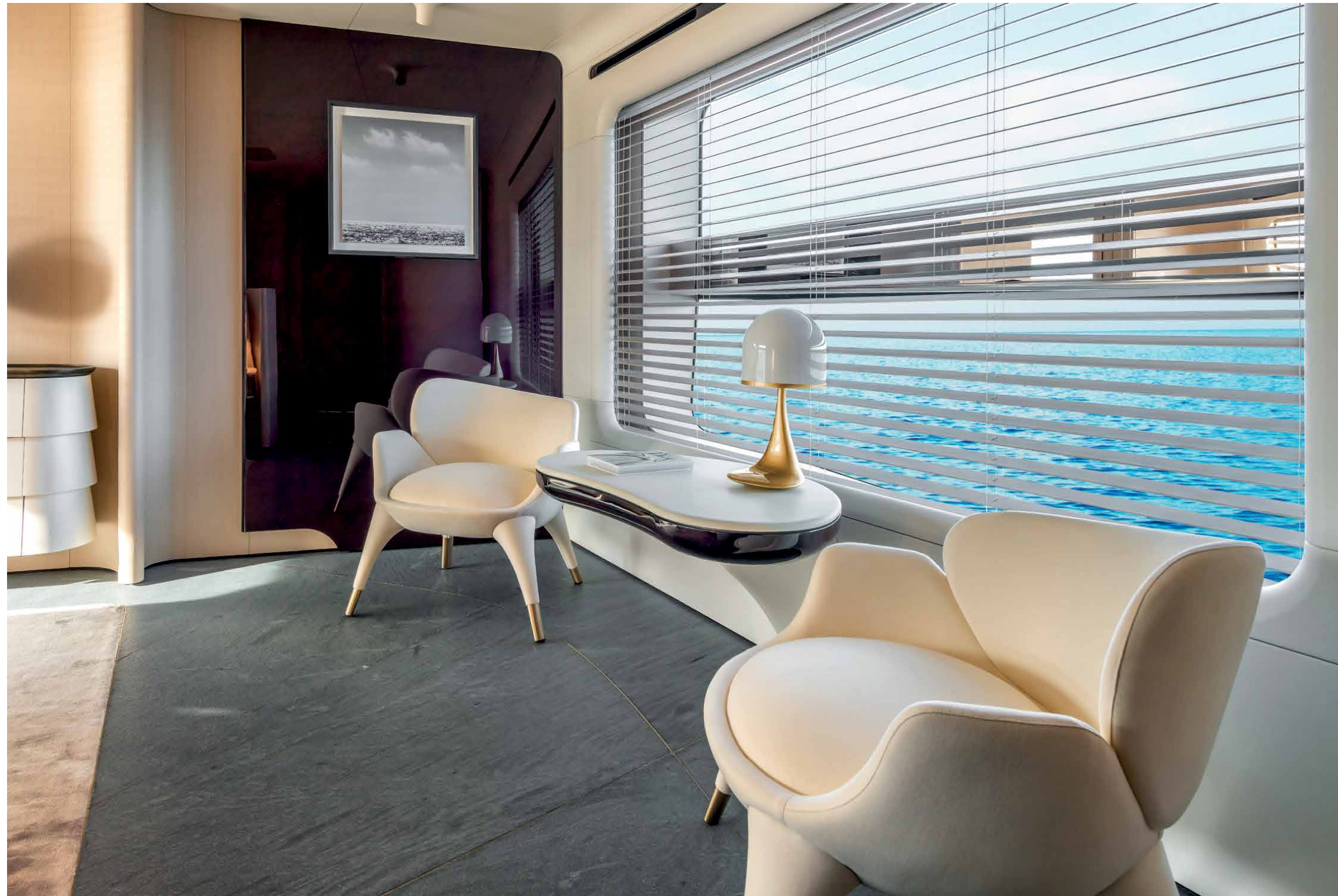


**ELEGANCE
AND
INSPIRATION**

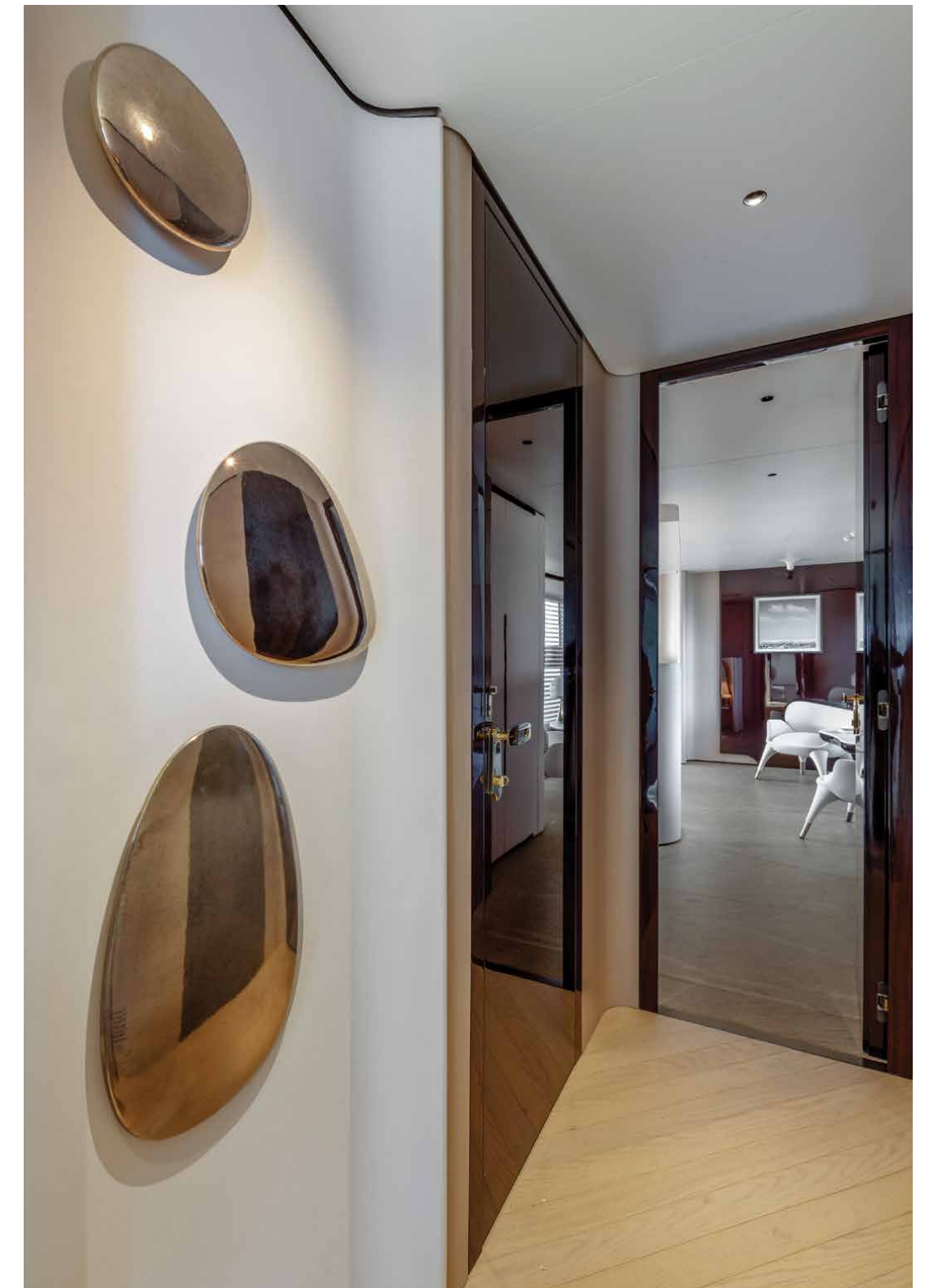
*Fluid lines
and discreet
elegance*



The full beam Owner's Suite is conceptually broken down into special regions, starting from the entrance as a lobby/dressing area. The main material is tay wood, clear and clean, contrasted against a polished mahogany. The floor is made of textured Cardoso stone.



*Fine materials, flowing lines and unique pieces designed by Achille Salvagni.
Each element tells a story of excellence providing a sensation of relaxed luxury.*

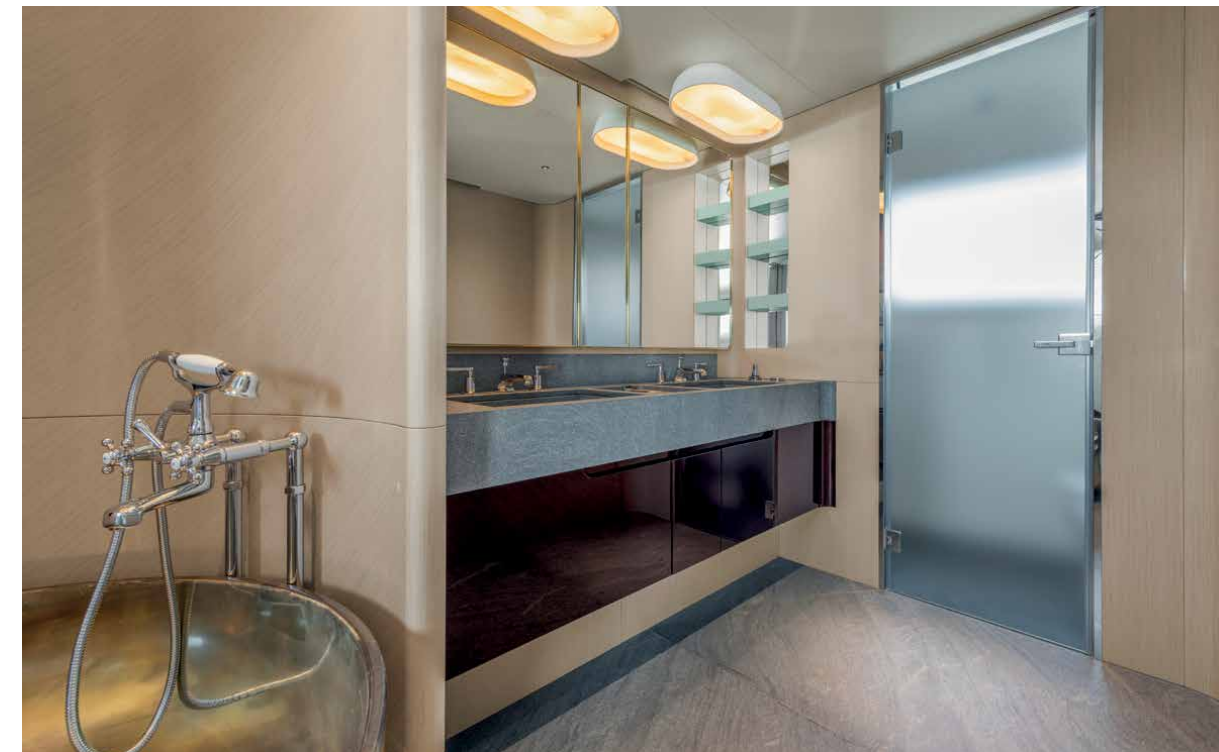


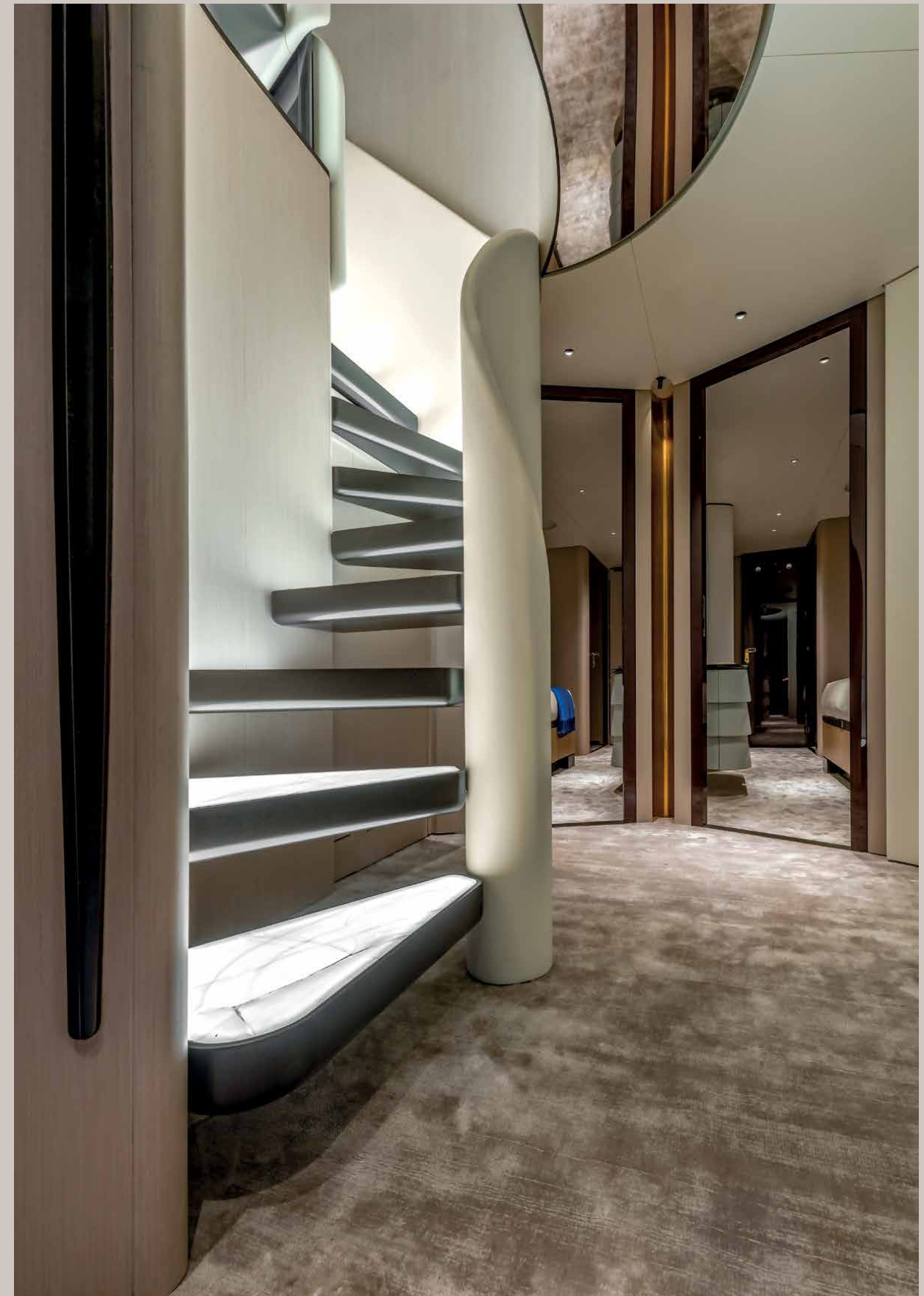
**UNEXPECTED
GEOMETRIES**





Imagining the next expression of a growing trend, Anchille Salvagni evolved the bathroom into a wellness area, centered around the large freestanding tub which doubles as a rich design element. This new pleasurable area is accessible by a large auto-sliding door, not as an addition, but as a natural extension of the master suite. With the door wide open, the combined space becomes a temple of relaxation and comfort.





*Fluid lines
and discreet
elegance*



View of the portside VIP cabin



Achille Salvagni does not limit himself to redefining the environments onboard, but also enriches them through a close attention to décor, favoring the tension between forms and the purity of the line, abandoning any ostentation at the same time



Portside VIP cabin

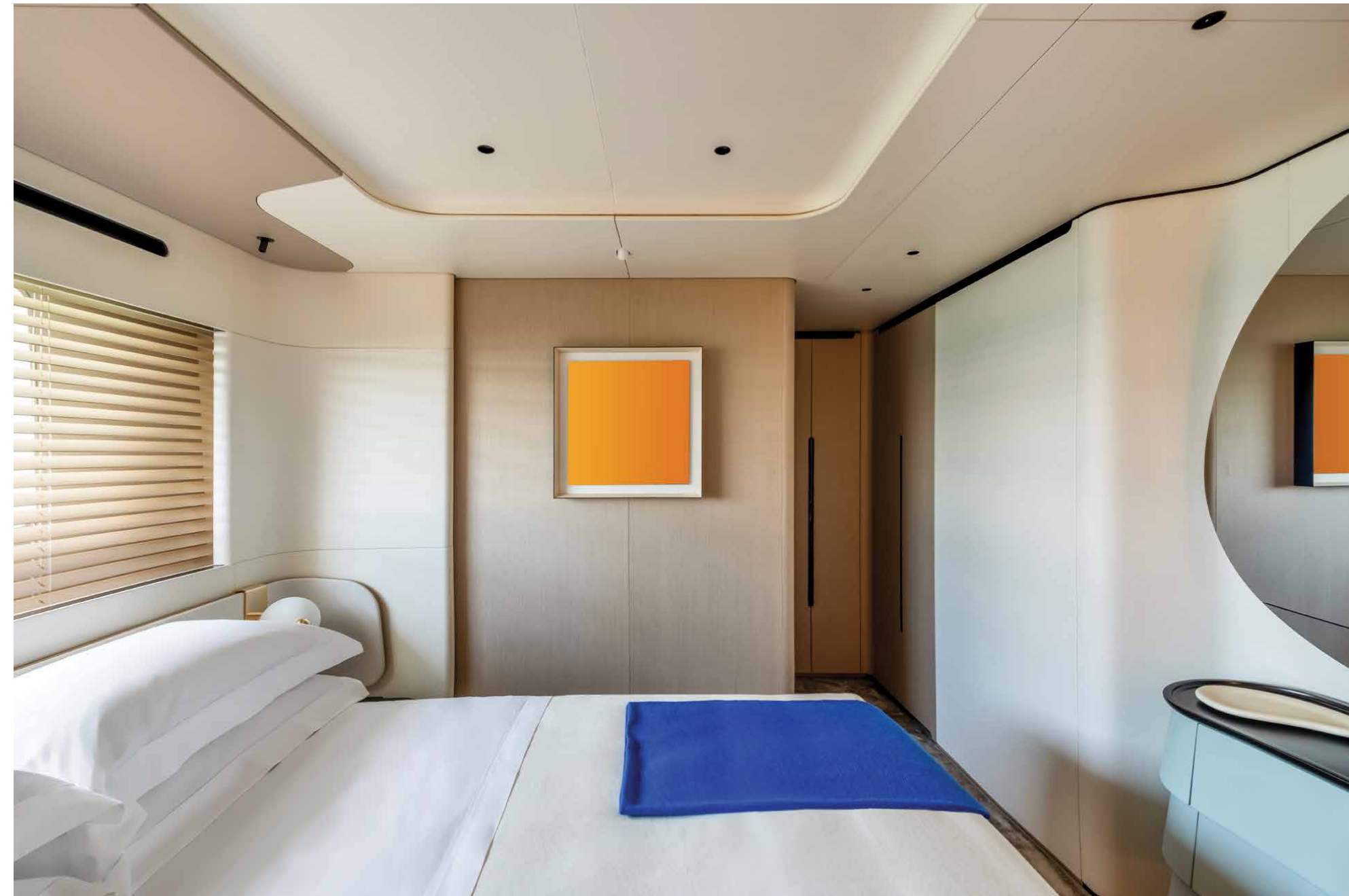
*The charm
of symmetry*



VIP cabin view

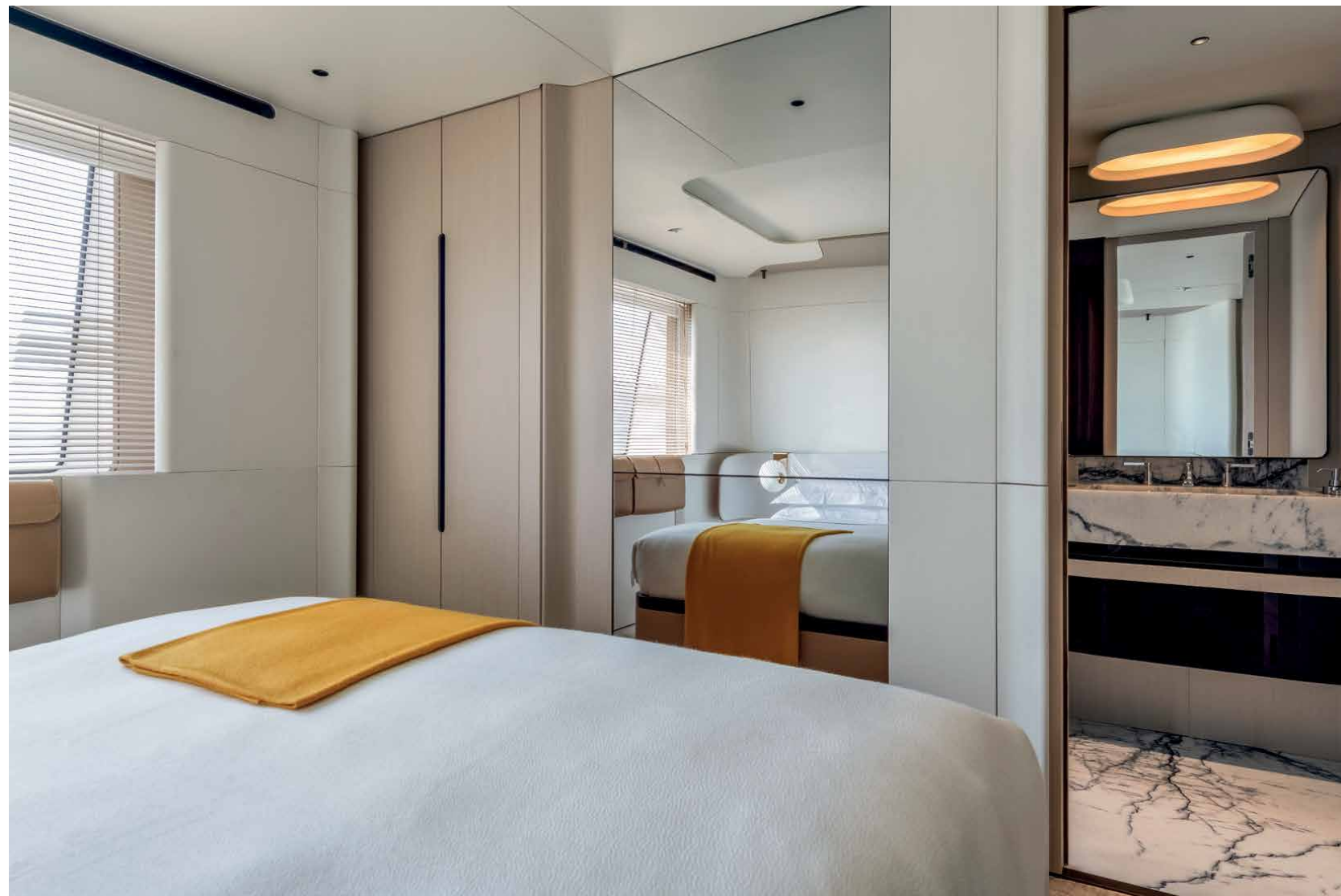


On the Lower Deck there are four en-suite guest cabins: two VIPs aft and two guest cabins forward.



View of the starboard side VIP cabin.

*The art
of hospitality*

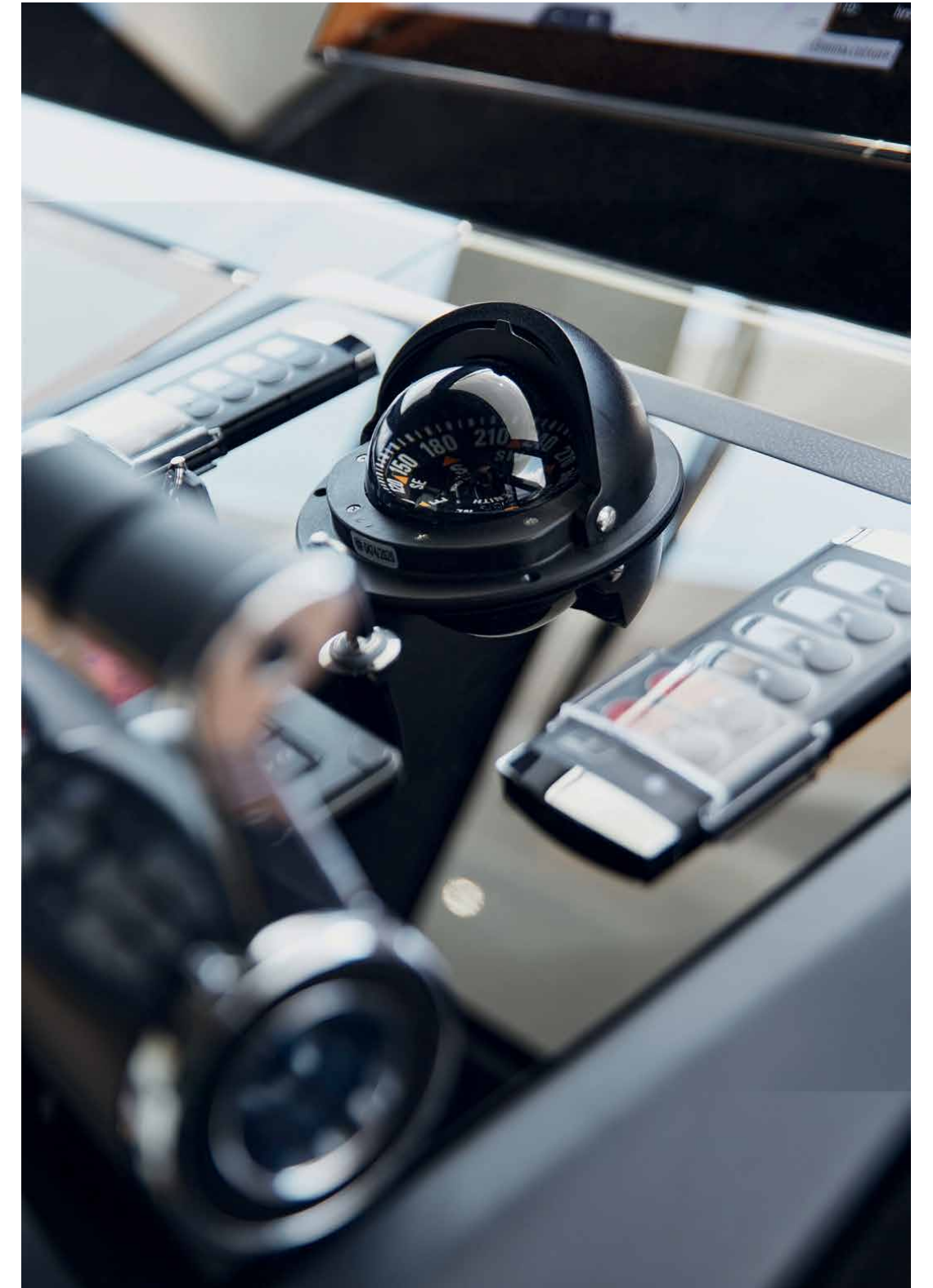


The 6 cabins layout offers an additional VIP cabin positioned on the Upper Deck therefore with a beautiful sea view thanks to the large window, while the captain's cabin is located on the Lower Deck. More traditional layout solutions are also available, with an enclosed pantry and a captain cabin on the Upper Deck just behind the bridge.



View of one of the several crew cabins.





The command area is a blend of elegance and technology, characterized by a futuristic helm that integrates all onboard systems with Simrad Command.

CARBON TECH

The Trideck is a member of the Carbon Generation, with the entire superstructure laminated in carbon fibre for a 30% local reduction in weight and an absolute weight reduction of 6 tonnes.

This means that despite the increased volumes on board, the yacht's low centre of gravity is preserved, delivering excellent static and dynamic stability.

The combination of the D2P® hull and carbon superstructure result in a significant improvement in performance with lower fuel consumption, higher speed and increased range.

ROLL MOMENTUM
UP TO **-10% REDUCTION**

SUPERSTRUCTURE
-30% LIGHTER

REDUCED WEIGHT
-6 TONS WEIGHT SAVING

SUPERSTRUCTURE	—
FLYBRIDGE	—
RADAR ARCH	—
HARD TOP	—
TRANSOM/PLATFORM	—

—	Carbon Fiber
—	Hibryd Carbon and Glass Fiber





Technical features

D2P DISPLACEMENT TO PLANING® HULL SECOND GENERATION

The Azimut Grande Trideck features the new second-generation D2P® Displacement to Planing hull.

Designed by Pierluigi Ausonio together with the Azimut-Benetti Research and Development Department, the hull benefits from proprietary CFD software, FEM analysis and form optimisations to yield unrivalled results in terms of efficiency.

To put these results in context, when compared with a traditional hard chine hull, the improvement in displacement fuel efficiency reaches over 40%.

The D2P® hull is based on the combination of three main elements: the double chine, which gives stability at displacement speeds while reducing drag at higher speeds; the bow wavepiercer, increasing the hull length at the waterline, reducing displacement consumption and reducing pitching in rough seas, and finally the central skeg, that guarantees optimal course stability, especially in aft quartering seas.





Hotel Mode is the simple way to define an ingenious and innovative way to enjoy time at anchor at zero emissions in the most complete silencenature can offer.

In Hotel Mode, onboard systems are fed by dedicated lithium ion battery packs instead of generators for up to 4 hours during the day and up to 7 hours at night, when power usage naturally decreases (range varies depending on weather conditions and actual electricity usage).

While in Hotel Mode on board systems are fed by dedicated lithium ion battery packs in lieu of generators for up to 4,8 hours during the day and up to 7 hours at night, when the electrical power need of the yacht naturally decreases (range varies depending on weather conditions as well as personal use of electrical loads).

Technical features

HOTEL MODE

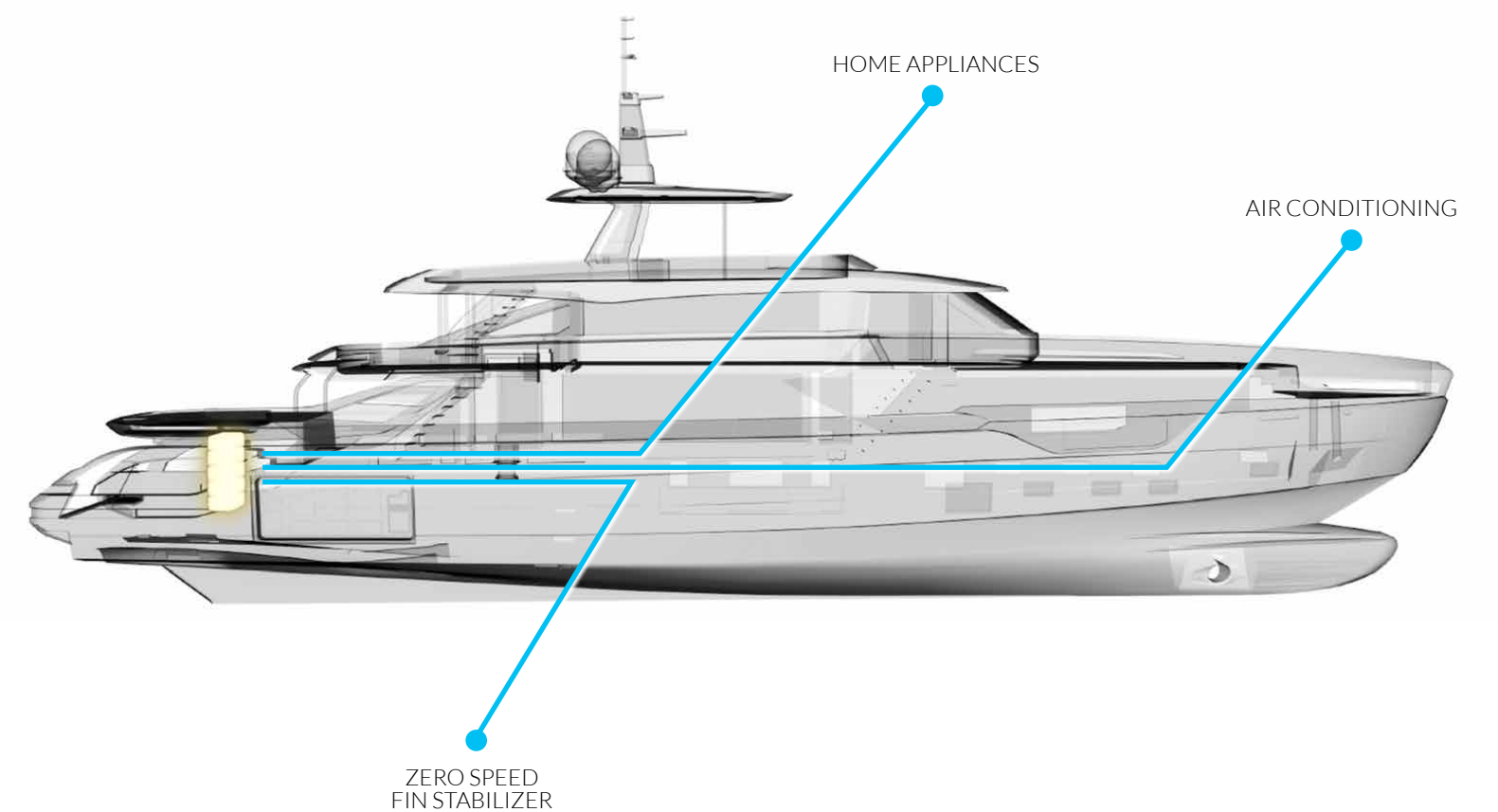
STORAGE BATTERY 130KW/H - ZERO EMISSION

AUTONOMY @ANCHOR

UP TO 4 HOURS BY DAY
UP TO 7 HOURS BY NIGHT

KEY BENEFITS

GENERATORS OFF
ZERO NOISE
ZERO EMISSION



TECHNICAL FEATURES

*Elegance meets
cutting edge technology*



MAIN TECHNICAL DATA

Length overall (incl. pulpit)	38.22 m (125' 5")
Beam max	7.98 m (26' 2")
Draft (incl. props at full load)	2.05 m (6' 9")
Displacement (at full load)	approx 190 t (418874 lb)

PERFORMANCE

Engines	2 x 2400 mHP MTU 2 x 2600 mHP MTU
Maximum speed	Up to 23/24 kn
Cruising speed	Up to 20/21 kn

ACCOMODATION

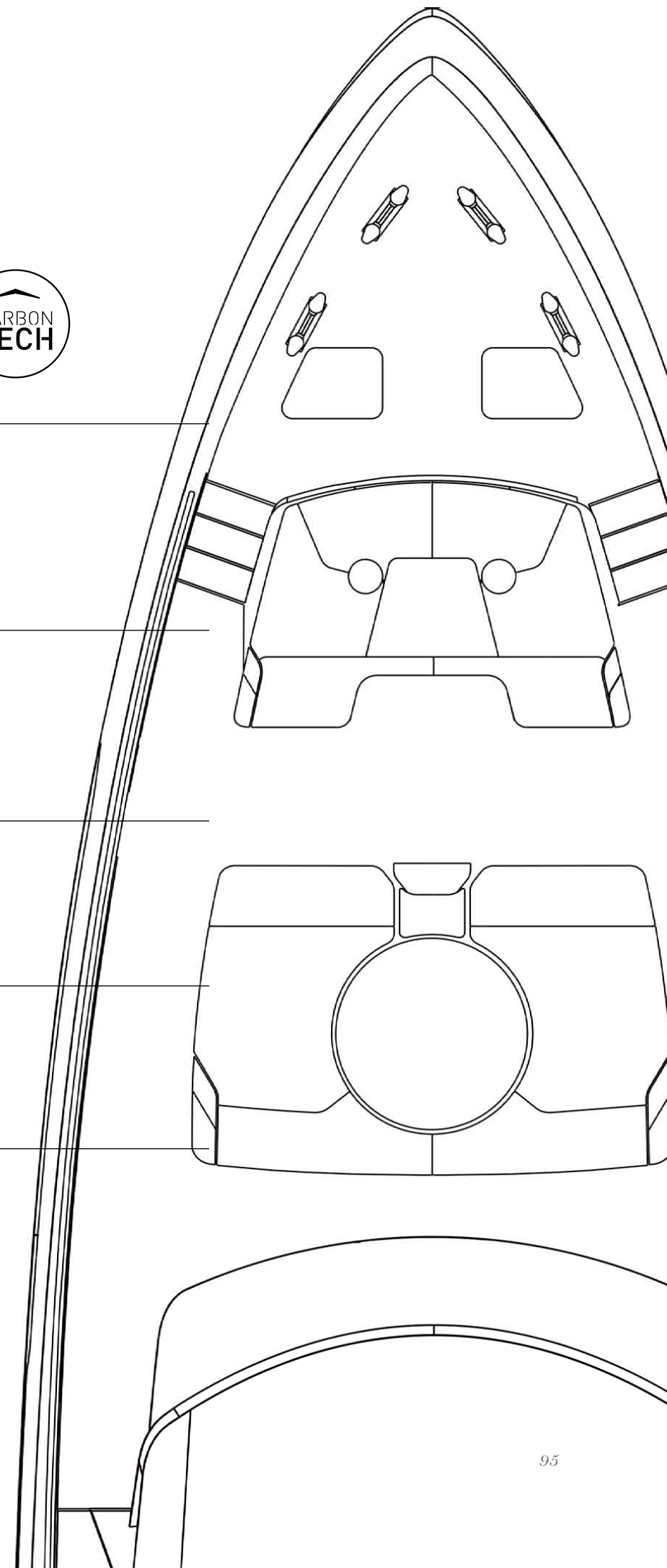
Cabins	5/6 + 4 crew
Berths	10 + 6 crew
Head compartments	7 + 4 crew

TANK CAPACITY

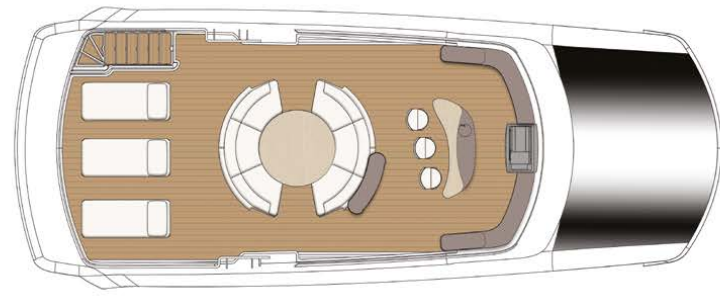
Fuel capacity	22500 l (5944 US Gal)
Fresh water	4300 l (1136 US Gal)
Sewage and grey water	3500 l (925 US Gal)

PROJECT

Building material	Carbon fibre and GRP
Exterior styling & concept	Alberto Mancini
Interior designer	Achille Salvagni Architetti
Hull designer	Pierluigi Ausonio Naval Architecture & Azimut Yachts
Builder	Azimut Yachts



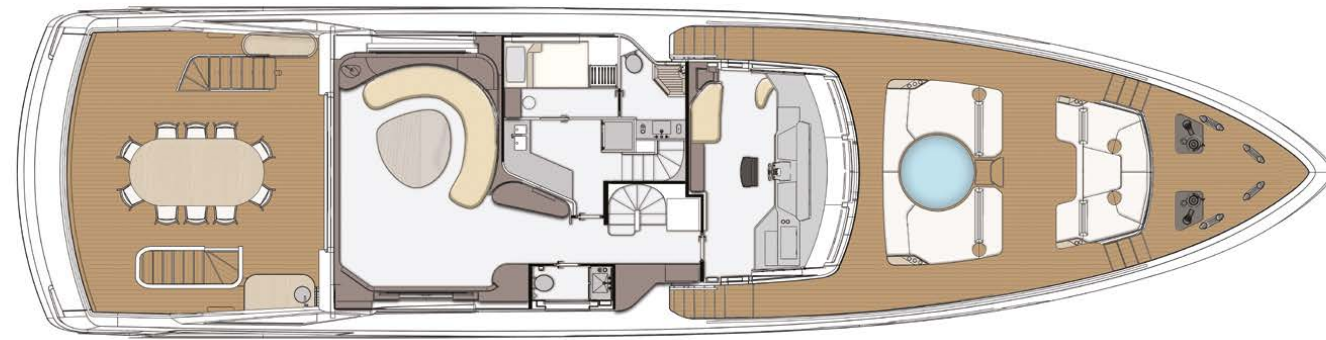
General arrangements



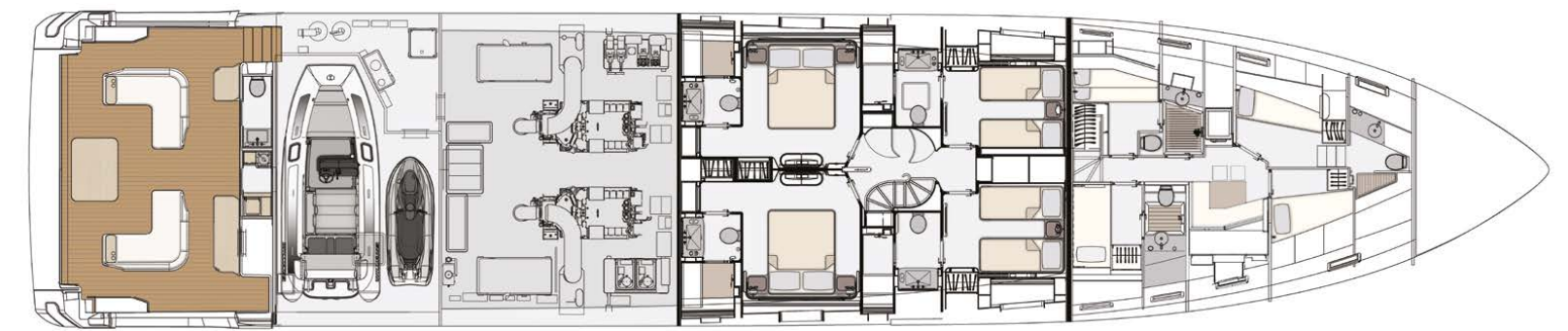
Sundeck



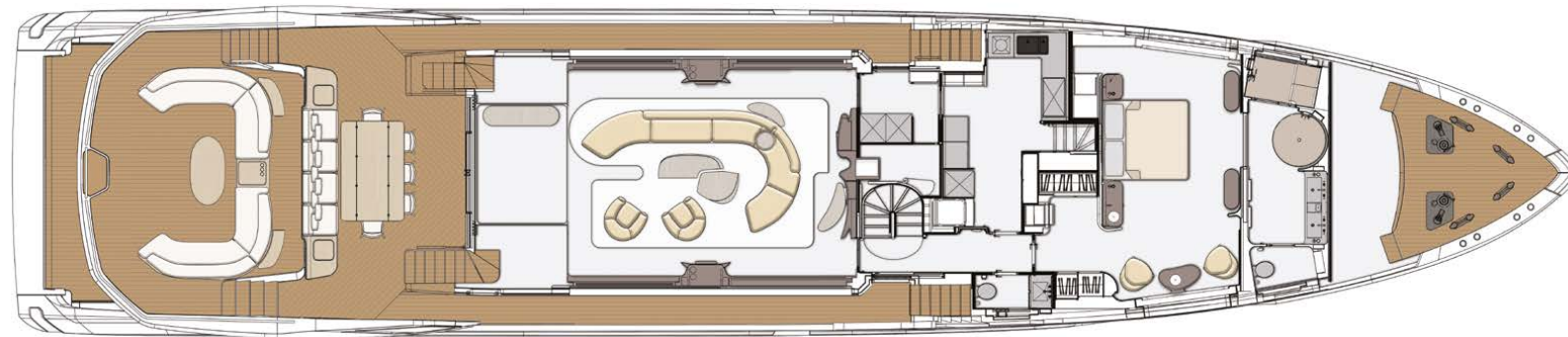
Upperdeck - layout with 6 cabins, VIP suite on upperdeck



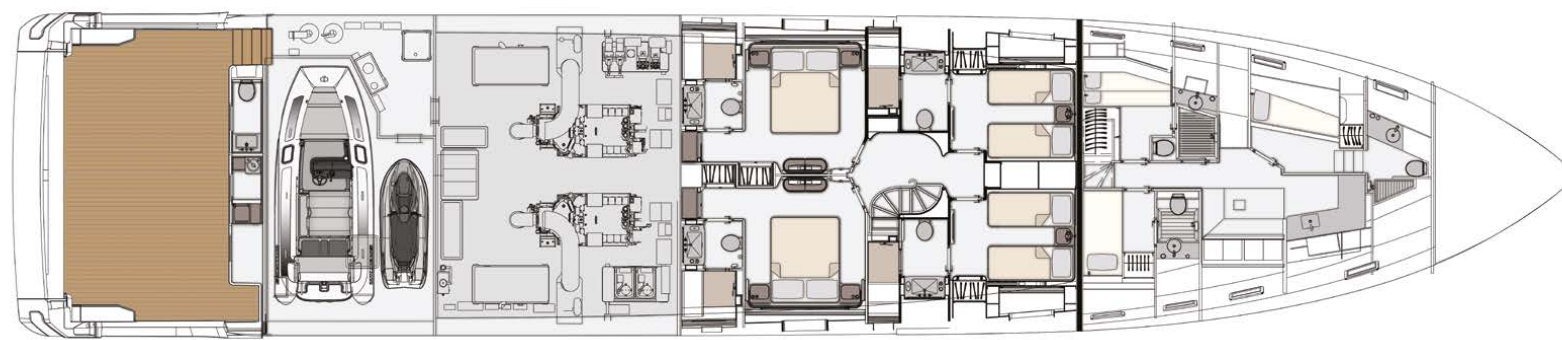
Upperdeck - layout with 5 guest cabins, pantry and captain's cabin on upperdeck



Lowerdeck - layout with 6 guest cabins, captain's cabin on lowerdeck



Maindeck



Lowerdeck - layout with 5 guest cabins

Regulations UNI ISO 8666

The levels of performance described apply to a standard craft (with standard equipment installed) with clean hull, propeller and rudders. Moreover, it is specified that such levels of performance were achieved under favourable sea and wind conditions (1 on the Beaufort scale and 1 on the Douglas scale); in the case of diverse or less favourable sea conditions performance levels may vary considerably.

EC Approved

Owing to constant technological developments, Azimut-Benetti S.p.A. reserves the right to modify the technical specifications of its boats at any time and without prior notice.



A pioneering privately owned company

When you choose an Azimut Grande, you become a player in an all-Italian story, the story of a shipyard with a prestigious past, a rock solid company with an image of success which gives luxury yachts an added value that lasts over time. It is a large family business that builds boats and blends fanatical attention to detail and superb Italian creativity with constant technological development. With a vast distribution network spread over the five continents, Azimut Yachts is the symbol of the very best of "Made in Italy" throughout the world. The true leader in the manufacture of luxury yachts where unparalleled style merges seamlessly with innovation.

This brochure in no way constitutes a contract of sale for the boatyard's vessels to any person or company. All information contained herein, including but not limited to technical and performance data, illustrations, and drawings, is non-binding and for purposes of illustration only. The information in this brochure refers to the boatyard's standard motoryacht models available as of the date of publication. Technical and descriptive information is valid only to the extent that it pertains to the specific vessel that is the subject of a purchase. Contract terms are valid only to the extent that they are contained in a contract of sale. This document is based on information available at the time of publication. Despite efforts to ensure the greatest possible accuracy, the information contained herein may fail to cover all details, omit technical or commercial changes that may have been made subsequent to publication, describe features that are not present, and fail to envisage all circumstances that might occur. Any illustrations, photographs, diagrams and examples shown in this brochure are included solely for the purposes of illustrating the text. Due to the different features of each vessel, the boatyard assumes no liability for actual use based on the illustrated applications.

CONCEPT AND ART DIRECTION:

Matteo Fiorini Studio

GRAPHIC PROJECT:

Giacomo Vignoni Studio

PHOTOGRAPHS:

Paolo Petrignani

Michela Locci

Alessandro Guerrieri

Roberto Ferrarin

Migivisual

Printed in Italy by Tipo Stampa - August 2021

Azimut|Benetti SpA

VIA M. LUTHER KING, 9 - 10051 AVIGLIANA (TORINO - ITALIA)

Azimut Yachts - a brand of Azimut|Benetti Group

azimutyachts.com

AZIMUT YACHTS THANKS TO: Achille Salvagni Architetti, Aldus, Loro Piana, Oliveri Home, Seabob.

